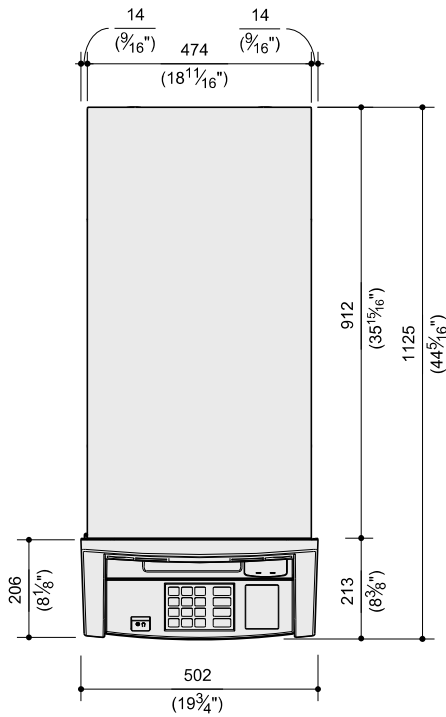
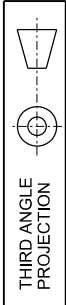


**CONSULT WITH DIEBOLD INSTALLATION/SERVICE BRANCH FOR ADDITIONAL DETAILS AND INFORMATION. PLEASE SEE PLANNING AND SITE PREPARATION GUIDE TP-821482-001A.**

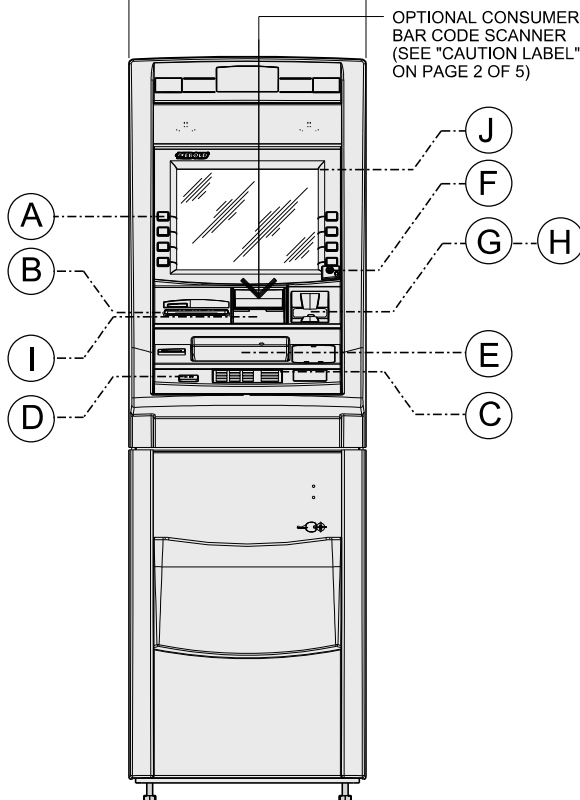
DIMENSIONS IN MILLIMETRES  
(DIMENSIONS IN INCHES)



**PLAN VIEW**

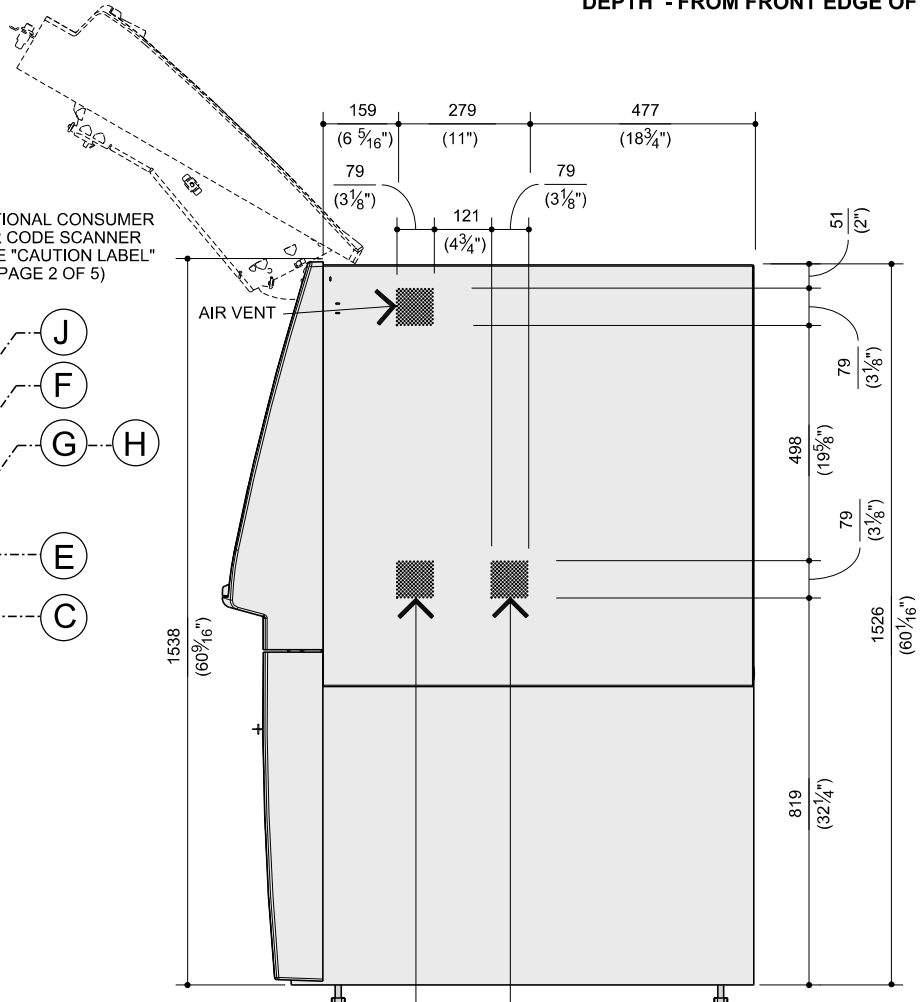
|                                 | HEIGHT              | DEPTH             |
|---------------------------------|---------------------|-------------------|
| (A) TOP FUNCTION KEY            | 1200<br>(47 1/4")   | 197<br>(7 3/4")   |
| (B) RECEIPT/STATEMENT PRINTER   | 994<br>(39 1/8")    | 153<br>(6 1/16")  |
| (C) KEYPAD (TOP ROW)            | 871<br>(34 5/16")   | 107<br>(4 3/8")   |
| (D) HEADPHONE JACK (ADA)        | 860<br>(33 7/8")    | 30<br>(1 3/8")    |
| (E) ADVANCED FUNCTION DISPENSER | 875<br>(34 1/2")    | 128<br>(5")       |
| (F) HEADPHONE JACK (CSA)        | 1086<br>(42 13/16") | 148<br>(5 13/16") |
| (G) MOTORIZED CARD READER       | 995<br>(39 1/4")    | 170<br>(6 1/16")  |
| (H) DIP CARD READER             | 995<br>(39 1/4")    | 122<br>(4 13/16") |
| (I) BAR CODE SCANNER            | 1002<br>(39 7/16")  | 140<br>(5 1/2")   |
| (J) TOP OF MONITOR              | 1299<br>(51 1/8")   | 336<br>(13 1/4")  |

**HEIGHT - FROM BOTTOM OF SAFE  
DEPTH - FROM FRONT EDGE OF BEZEL**



**FRONT VIEW**

OPTIONAL CONSUMER  
BAR CODE SCANNER  
(SEE "CAUTION LABEL"  
ON PAGE 2 OF 5)



**SIDE VIEW**

# CONDUIT AND JUNCTION BOX REQUIREMENTS

- 1 25mm (1") METAL CONDUIT FROM ALARM CONTROL CABINET JUNCTION BOX TO 102mm (4") SQ. X 54mm (2 1/4") DP. JUNCTION BOX (ALL BY OWNERS E.C.) DIEBOLT TO PROVIDE FLAT COVER WITH TAMPER SWITCH.
- 2 WHEN "SECUROMATIC" AFTER HOUR DEPOSITORY IS TO BE CONNECTED TO CASH RECYCLER, OWNERS E.C. TO RUN 19mm (3/4") METAL CONDUIT FROM 102mm (4") SQ. X 54mm (2 1/4") DP. JUNCTION BOX TO AFTER HOUR DEPOSITORY.
- 3 OWNERS E.C. TO RUN 19mm (3/4") LIQUID TIGHT FLEX METAL CONDUIT OR 19mm (3/4") RIGID CONDUIT FROM JUNCTION BOX TO CABLE CONNECTING PLATE.
- 4 19mm (3/4") METAL CONDUIT AND UNSWITCHED ELECTRICAL SUPPLY TO 102mm (4") SQ. X 54mm (2 1/4") DP. JUNCTION BOX WITH RECEPTACLE WITHIN 2210mm (87") OF SIDE CONNECTING PLATE. BOTTOM CONNECTION MUST BE COMPENSATED ACCORDINGLY (ALL BY OWNERS E.C.) (SEE POWER REQUIREMENTS).
- 5 OWNERS E.C. TO SUPPLY COMPATIBLE RECEPTACLE FOR COUNTRY SPECIFIC PLUG-IN CONNECTOR SUPPLIED WITH UNIT. POWER CORD LENGTH 2210mm (87") FROM SIDE OF UNIT.

### NOTE:

JUNCTION BOXES MUST BE LOCATED WITHIN 2210mm (87") OF CONNECTING PLATE. (LENGTH OF ELECTRICAL POWER CABLE PROVIDED WITH UNIT), LOCATE IN AN EASILY ACCESSIBLE AREA.

BOXES CAN BE FLUSH MOUNTED WITH CONCEALED CONDUIT FOR NEW CONSTRUCTION OR BOXES CAN BE SURFACE MOUNTED WITH EXPOSED CONDUIT FOR EXISTING CONSTRUCTION.

### POWER REQUIREMENTS

THE CASH RECYCLER REQUIRES A SINGLE-PHASE, THREE-WIRE UNSWITCHED POWER RECEPTACLE. WIRING TO THE RECEPTACLE MUST INCLUDE A THIRD-WIRE EARTH GROUND (CONDUIT GROUND IS NOT ACCEPTABLE). THE CASH DISPENSER WILL PROVIDE A POWER CORD WITH A COUNTRY SPECIFIC POWER PLUG. THE POWER SUPPLIED MUST BE AS SPECIFIED BELOW.

- 100-127 VAC (+6%,-10%) 50Hz (+/-1%) SINGLE PHASE
- 100-127 VAC (+6%,-10%) 60Hz (+/-1%) SINGLE PHASE
- 200-240 VAC (+/-10%) 50Hz (+/-1%) SINGLE PHASE
- 200-240 VAC (+/-10%) 60Hz (+/-1%) SINGLE PHASE

POWER TO THE CASH RECYCLER IS TO BE A DEDICATED SERVICE AND MUST BE PROTECTED BY A SAFETY QUICK-DISCONNECT DEVICE TO BREAK LINE VOLTAGE (SUCH AS A CIRCUIT BREAKER AT THE ELECTRICAL SERVICE PANEL, THE QUICK-DISCONNECT DEVICE (OR CIRCUIT BREAKER) MUST TURN OFF THE LINE VOLTAGE AT THE FOLLOWING AMPERAGE.

- 100-127 VAC (+6%,-10%) SERVICE, DISCONNECT AT 20 AMPERES
- 200-240 VAC (+/-10%) SERVICE, DISCONNECT AT 10 AMPERES

THE MODULE BULK POWER SUPPLY AND PROCESSOR POWER SUPPLY WILL PROVIDE POWER CONDITIONING TO PREVENT THE TERMINAL FROM MALFUNCTIONING DUE TO SHORT-TERM AC POWER FLUCTUATIONS AS OUTLINED IN EN61000-4-11.

### POWER USAGE

|                                    |           |
|------------------------------------|-----------|
| MACHINE STATUS                     | ①         |
| IDLE (NO TRANSACTION)              | 230 WATTS |
| TRANSACTION (DISPENSE IN PROGRESS) | 390 WATTS |

### CONFIGURATION

- ① PROCESSOR, COLOR LCD CONSUMER DISPLAY, MOTORIZED CARD READER, RECEIPT PRINTER, AND 5 CASSETTE DISPENSER.

THE POWER USE DEPENDS ON THE NUMBER AND TYPE OF DEVICES PRESENT IN THE CASH DISPENSER, AND THE TYPE OF TRANSACTION THE CASH DISPENSER IS PERFORMING.

### HEAT OUTPUT CONFIGURATION

- ① 1331 BTU/HR DISPENSING  
785 BTU/HR IDLE

### OPERATING ENVIRONMENT

- SAFE LOCATION
- 10° C TO 38° C (50 F TO 100° F)
- RELATIVE HUMIDITY (NON-CONDENSING)  
20 TO 80% AT 32° C (90° F)  
20 TO 55% AT 38° C (100° F)

### WEIGHT OF UNIT

665kg (1466 LBS.)

DIMENSIONS IN MILLIMETRES  
(DIMENSIONS IN INCHES)



### SIGNAL CABLE RUN CONSTRAINTS

THE FOLLOWING CHART ITEMIZES THE PHYSICAL SPACING REQUIREMENTS OF THE SIGNAL CABLE RUN WITH RESPECT TO OTHER POWER AND ELECTRICAL EQUIPMENT CABLE RUN.

| TYPE OF ELECTRICAL RUN   | SEPARATION FROM OTHER CABLES |             |               |
|--|------------------------------|-------------|---------------|
|  | BELOW 2 KVA                  | 2-5 KVA     | ABOVE 5 KVA   |
| FLUORESCENT, NEON OR INCANDESCENT LIGHTING FIXTURES  | 127mm (5")                   | 127mm (5")  | 127mm (5")    |
| UNSHIELDED POWER LINE OR ELECTRICAL EQUIPMENT  | 127mm (5")                   | 305mm (12") | 610mm (2'-0") |
| UNSHIELDED POWER LINES OR ELECTRICAL EQUIPMENT WITH SIGNAL CABLES ENCLOSED IN GROUNDED CONDUIT | 64mm (2 1/2")                | 152mm (6")  | 305mm (12")   |
| POWER LINES IN GROUNDED CONDUIT WITH SIGNAL CABLES IN GROUNDED CONDUIT                         | 31mm (1 1/8")                | 76mm (3")   | 153mm (6")    |

### SIGNAL CABLE INSTALLATION CONSTRAINTS

RELATIVE CARE IS REQUIRED WHEN INSTALLING SIGNAL CABLES IN CONDUITS. UNLIKE POWER AND LIGHTING CABLE, SIGNAL CABLES HAVE SMALL CONDUCTORS AND LIGHT INSULATION AND WILL NOT WITHSTAND AS MUCH STRAIN IN INSTALLATION. CONSULT LOCAL CODES FOR SIGNAL CABLE INSTALLATION GUIDELINES AND REGULATIONS.

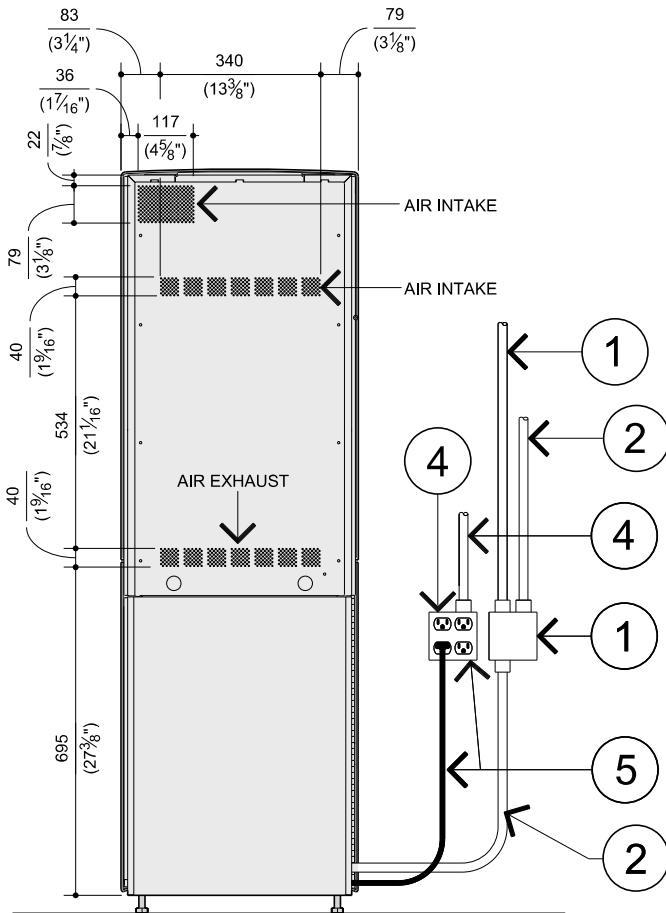
### CAUTION LABEL



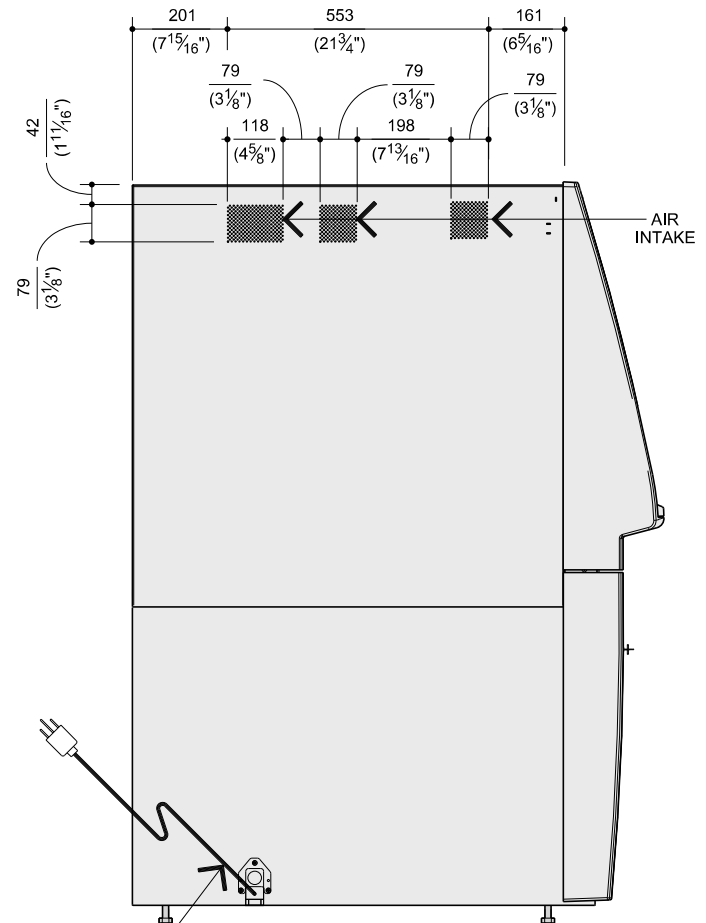
PAGE 2 OF 5

\*ALL DIMENSIONS AND DESIGN CRITERIA SUBJECT TO CHANGE WITHOUT NOTICE\*

FILE NO. 177-598 REV. 0






REAR VIEW



POWER CORD  
2210mm (87")

SIDE VIEW

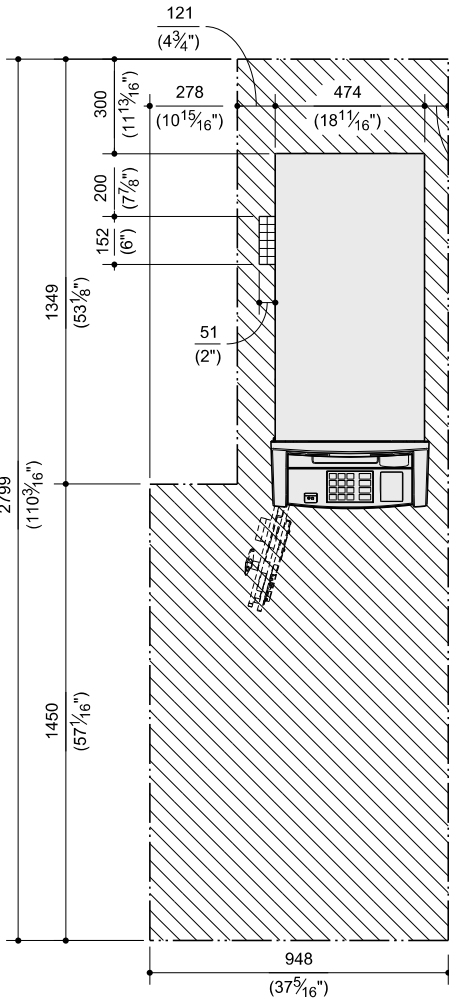
CALL 1-800-999-3600

-  RECOMMENDED SERVICE AREA
-  MINIMUM SERVICE AREA
-  ALL ELECTRICAL AND DATA CABLES MUST ENTER UNIT IN THIS AREA

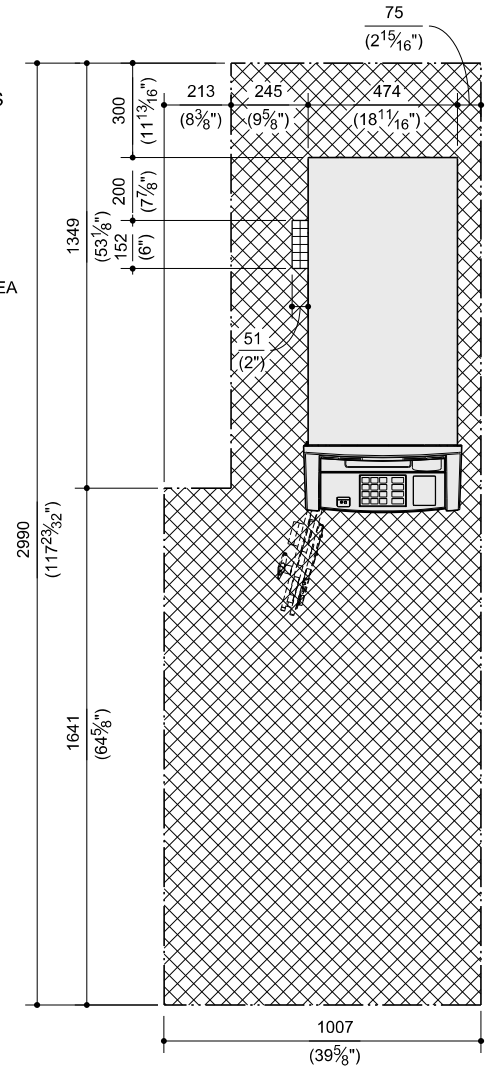
**NOTE:**

SHOWN IS THE MINIMUM/RECOMMENDED AREA REQUIRED FOR INSTALLATION AND SERVICE. DIMENSIONS SHOWN MAY BE INCREASED WHEREVER POSSIBLE TO IMPROVE INSTALLATION AND SERVICE ACCESS. USE OF ANY AREA LESS THAN THE RECOMMENDED AREA MAY RESULT IN AN INCREASE IN INSTALLATION AND SERVICE TIME. CONSULT WITH DIEBOLD INSTALLATION/SERVICE BRANCH FOR SPECIAL BUILDING CONDITIONS.

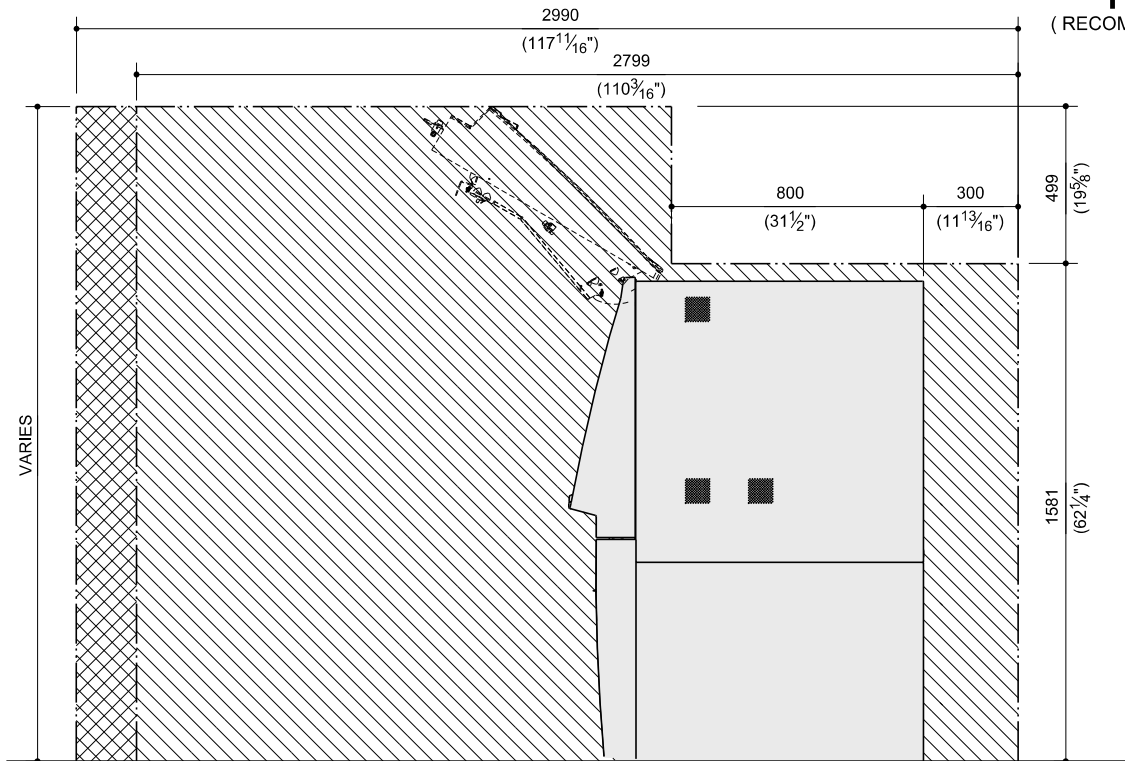
DIMENSIONS IN MILLIMETRES  
(DIMENSIONS IN INCHES)



**PLAN VIEW**  
( MINIMUM SERVICE AREA )



**PLAN VIEW**  
( RECOMMENDED SERVICE AREA )



**SIDE VIEW**  
( MINIMUM/RECOMMENDED SERVICE AREA )

HEIGHT OF SPACE IN FRONT OF TERMINAL SHOULD ALLOW A PERSON TO STAND AND SERVICE THE TERMINAL



CALL 1-800-999-3600

**NOTES:**

**FOR ADDED SECURITY:**

IT IS RECOMMENDED THAT THE CASH RECYCLER SAFE BE SECURED TO THE FLOOR WITH ANCHOR BOLTS. USE THE FOLLOWING GUIDELINES TO DETERMINE THE APPROPRIATE METHOD FOR YOUR INSTALLATION.

**ANCHORING THE CASH RECYCLER TO CONCRETE FLOORS:**

IT IS RECOMMENDED THAT THE CASH RECYCLER BE ANCHORED TO CONCRETE FLOORS WHENEVER POSSIBLE. DIEBOLD RECOMMENDS USING A M20 OR 19mm (3/4") ANCHOR BOLT THAT IS 203mm (8") LONG. CONCRETE FLOORS OR CONCRETE BASES MUST BE A MINIMUM OF 102mm (4") THICK FOR ANCHORING TO BE EFFECTIVE. THERE IS NO LIMIT FOR MAXIMUM THICKNESS. ANCHOR BOLTS MUST BE USED IN ALL AVAILABLE ANCHOR HOLES. IF THE TERMINAL IS EQUIPPED WITH LEGS, THE LEVELING LEGS MUST BE REMOVED BEFORE THE TERMINAL IS ANCHORED. REFER TO VIEW "A" AND "B" FOR ADDITIONAL DETAILS.

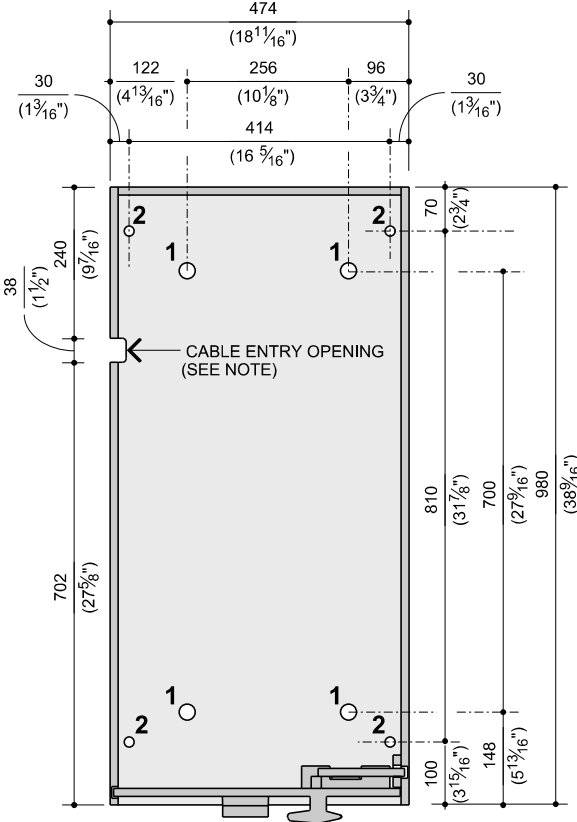
**ANCHORING THE CASH RECYCLER TO WOOD FLOORING:**

CASH RECYCLERS INSTALLED ON WOOD FLOORS OR FLOORS SUPPORTED BY WOODEN BEAMS CAN BE SECURED BY A MACHINE-THREADED NUT AND BOLT METHOD. IT IS PREFERRED THAT THE HARDWARE BE ATTACHED THROUGH SUPPORTING POSTS OR BEAMS FOR MAXIMUM HOLDING CAPACITY. ADDITIONALLY, THIS HARDWARE MUST ATTACH TO A LOCALLY FABRICATED REINFORCEMENT PLATE INSTALLED UNDERNEATH THE FLOOR TO PROVIDE ADDITIONAL STRENGTH. THE REINFORCEMENT PLATE IS TYPICALLY 6mm (1/4") THICK. IT IS IMPORTANT TO NOTE THAT THE OVERALL HOLDING CAPACITY OF A WOOD FLOOR WILL BE LESS THAN THAT OF CONCRETE FLOORS.

**ANCHORING THE CASH RECYCLER TO STEEL FLOORS:**

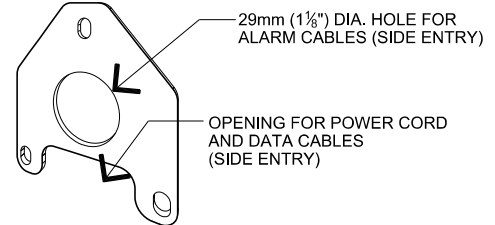
CASH RECYCLER INSTALLED ON STEEL FLOORS CAN BE SECURED BY A MACHINE-THREADED METHOD. IT IS PREFERRED THAT THE HARDWARE BE ATTACHED THROUGH SUPPORTING POSTS OR BEAMS FOR MAXIMUM HOLDING CAPACITY. ADDITIONALLY, THIS HARDWARE MUST ATTACH TO A LOCALLY FABRICATED REINFORCEMENT PLATE INSTALLED UNDERNEATH THE FLOOR TO PROVIDE ADDITIONAL STRENGTH. THE COMBINED BACKING PLATE AND FLOOR THICKNESS MUST BE AT LEAST 13mm (1/2").

DIMENSIONS IN MILLIMETRES  
(DIMENSIONS IN INCHES)



- 1 (4) 25.4mm (1") DIA. FLOOR MOUNTING HOLES
- 2 (4) 14mm (9/16") DIA. LEVELING LEG HOLES

**PLAN VIEW-SAFE FLOOR**

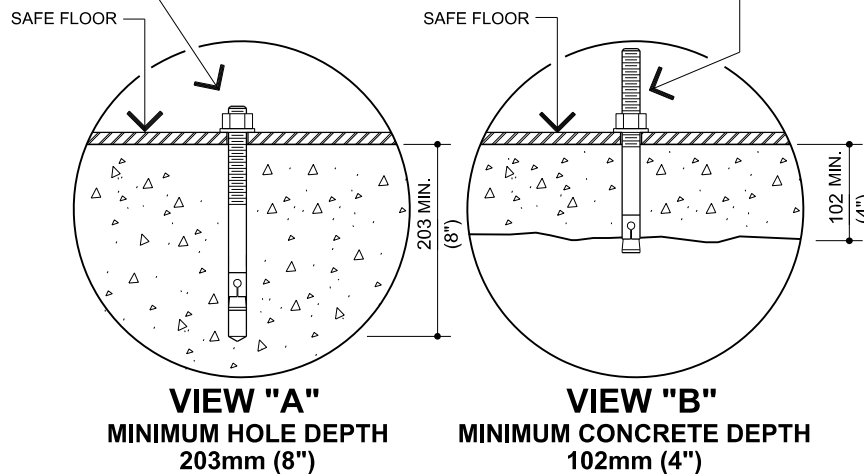


**POWER CABLE PLATE DETAIL**

**CABLE ENTRY NOTE:**

ELECTRICAL AND DATA CABLING ENTERS THE CASH RECYCLER THROUGH A CABLE ENTRY OPENING ON THE SIDE OF THE SAFE. CABLES ENTERING THE CASH RECYCLER PASS THROUGH THE POWER CABLE PLATE WHICH IS ATTACHED TO THE INSIDE WALL OF THE SAFE OVER THE CABLE ENTRY OPENING. CABLING CAN ENTER FROM THE SIDE OR OPTIONALLY FROM UNDER THE CASH RECYCLER. THE CABLE ENTRY OPENING IS ON THE RIGHT SIDE OF THE SAFE AS VIEWED FROM THE FRONT OF THE CASH RECYCLER.

OWNER'S INSTALLER TO DRILL (4) 19mm (3/4") DIA. X 203mm (8" MIN.) DEEP HOLES IN CONCRETE FLOOR (RECOMMENDED DRILLING COMPLETELY THROUGH FLOOR WHEN POSSIBLE AND TO BE SECURED TO THE CONCRETE FLOOR WITH (4) 19mm (3/4")-10 X 203mm (8") LONG WEDGE ANCHORS (SUPPLIED BY OWNER'S INSTALLER) DIEBOLD PART NUMBER 29-016376-000A, HILTI PART NUMBER 282520).



**VIEW "A"**  
MINIMUM HOLE DEPTH  
203mm (8")

**VIEW "B"**  
MINIMUM CONCRETE DEPTH  
102mm (4")