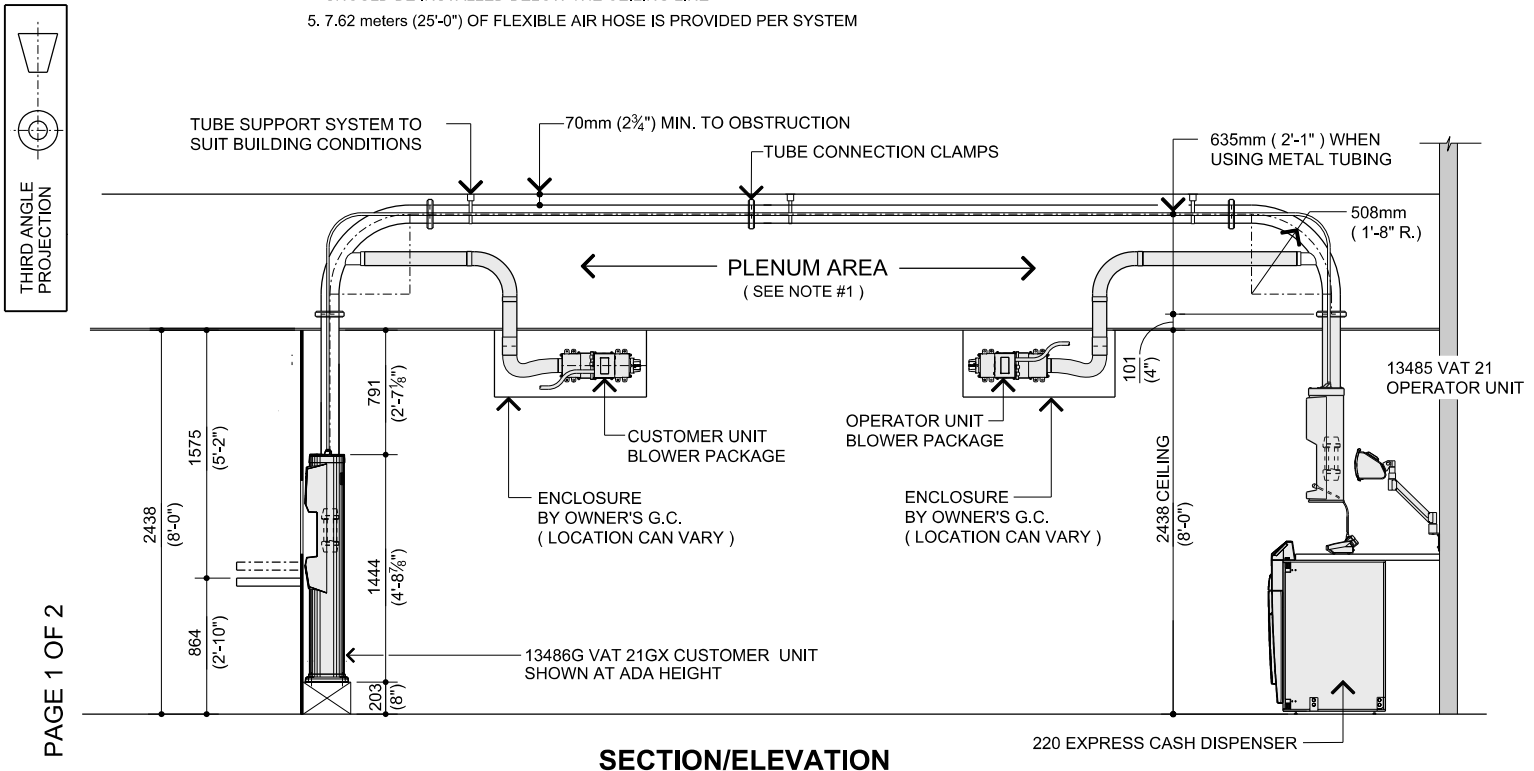


DIMENSIONS IN MILLIMETRES  
(DIMENSIONS IN FEET-INCHES)

### NOTES:

1. PLENUM CEILINGS - THE SPACE BETWEEN THE CEILING AND ROOF IN A BUILDING. IF THE AREA IS USED FOR AIR RETURN IN VENTILATION SYSTEM, FIRE AND BUILDING CODES MAY REQUIRE SPECIAL WIRE OR CONDUIT TO BE USED IF WIRE IS RUN THROUGH THIS AREA.
2. TUBING FOR THE PNEUMATIC SYSTEMS MUST BE STEEL.
3. PLENUM KIT NUMBER - 21-019780-000A ( 1 ) PLENUM KIT REQUIRED PER BLOWER ( MINIMUM OF (2) PLENUM KITS FOR VAT 21 )  
 PLENUM KIT INCLUDES  
 ( 1 ) 21-019775-000A TUBING, 89mm (3½") O.D. - 20'-0" LONG  
 (2) 21-019776-000A 90° TUBING BEND 89mm (3½") DIA.  
 (2) 21-019777-000A 45° TUBING BEND 89mm (3½") DIA.  
 (2) 21-019778-000A COUPLING SLIP 89mm (3½") I.D.  
 ( 1 ) 16-003267-000A METAL SEALANT, SCOTCH SEAL (R) #2084
4. THE "BLOWER PACKAGE" CANNOT BE INSTALLED IN THE PLENUM CEILING AREA. THE BLOWER PACKAGE SHOULD BE INSTALLED BELOW THE CEILING LINE
5. 7.62 meters (25'-0") OF FLEXIBLE AIR HOSE IS PROVIDED PER SYSTEM



PAGE 1 OF 2

### CABLE SPECIFICATION FOR PLENUM CEILING INSTALLATION

#### STANDARD CABLE (CONDUIT REQUIRED)

- VAT 21 CONTROL CABLE  
 ( 1 ) 91-020051-92 #20 AWG, 7 CONDUCTOR  
 (BELDEN #9439 OR EQUIVALENT)
- VAT 21 BLOWER CONTROL CABLE  
 ( 1 ) 91-020023-6262 #20 AWG, 2 CONDUCTOR, TWISTED PAIR,  
 WITH FOIL SHIELD (BELDEN #9154 OR EQUIVALENT)
- AUDIO CABLE  
 ( 1 ) #20 AWG, 6 CONDUCTOR, 3 TWISTED PAIR, FOIL SHIELD  
 WITH DRAIN, COLOR CODED ( BELDEN #9873 OR  
 EQUIVALENT)
- VIDEO CABLE  
 ( 1 ) RG-59U COAX CABLE  
 (BELDEN #8241 OR EQUIVALENT)

#### PLENUM CABLE (NO CONDUIT REQUIRED)

- VAT 21 CONTROL CABLE  
 ( 1 ) 91-122085-4262 #22 AWG, 8 CONDUCTOR, FOIL  
 SHIELD, PLENUM
- VAT 21 BLOWER CONTROL CABLE  
 ( 1 ) #18 AWG, 2 CONDUCTOR, STRANDED TWISTED PAIR, COLOR CODED, PLENUM  
 (BELDEN #82740 OR EQUIVALENT)
- AUDIO CABLE  
 ( 1 ) #24 AWG, 3 TWISTED PAIR, INDIVIDUAL FOIL SHIELDS WITH DRAIN,  
 COLOR CODED, LOW CAPACITANCE, PLENUM  
 (BELDEN #89370 OR EQUIVALENT)
- VIDEO CABLE  
 ( 1 ) RG-59U COAX CABLE  
 (BELDEN #82241 OR EQUIVALENT)

# RTS - TYPICAL SCHEMATIC FOR PLENUM INSTALLATION

**NOTES:**

ALL CAMERAS, MONITORS AND VAT MATRIX SWITCHERS MUST BE ON THE SAME ELECTRICAL PHASE.

**(A)** OWNER'S ELECTRICAL CONTRACTOR TO PROVIDE (1) DUPLEX OUTLET AT EACH ON (1) 120 VAC, 60 Hz. SINGLE PHASE, (3W), 20 AMP DEDICATED BRANCH CIRCUIT. **(A)**

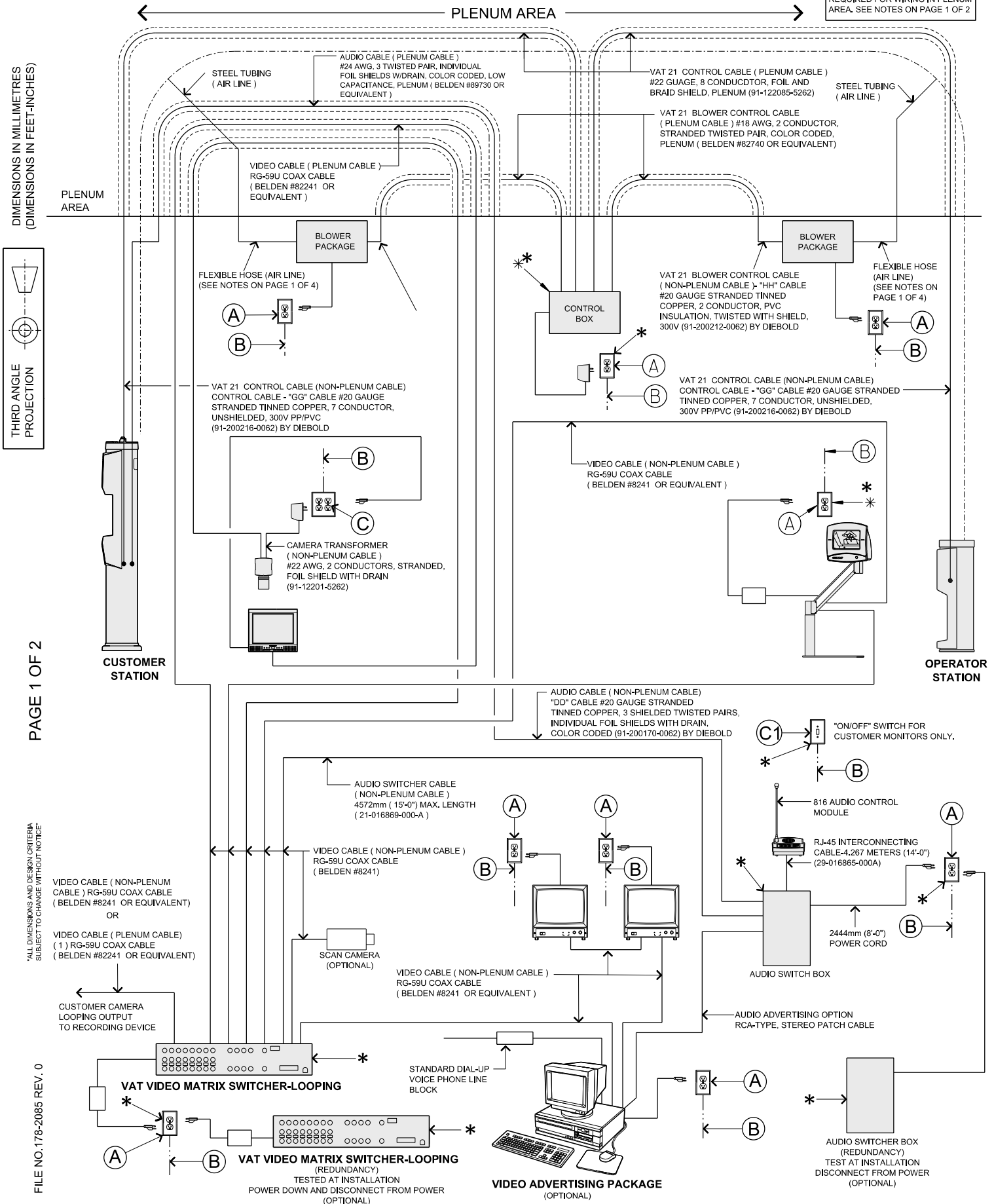
**(B)** ELECTRICAL CONTRACTOR TO PROVIDE CONDUIT **(B)** TO BUILDINGS ELECTRICAL SUPPLY PANEL.

**(C)(C1)** OWNER'S ELECTRICAL CONTRACTOR TO PROVIDE (1) DOUBLE DUPLEX OUTLET AT EACH ON (1) 120 VAC, 60 Hz. SINGLE PHASE, (3W), 20 AMP DEDICATED BRANCH CIRCUIT. **(C)**

CONTROLLED BY "ON/OFF" SWITCH **(C1)** IN OPERATOR AREA FOR CUSTOMER STATION MONITORS ONLY. "ON/OFF" SWITCH TO CONTROL A MAXIMUM OF (4) CUSTOMER STATIONS.

\* LOCATE IN OPERATORS KNEE SPACE AREA.

CONDUIT OR PLENUM CABLES REQUIRED FOR WIRING IN PLENUM AREA. SEE NOTES ON PAGE 1 OF 2



DIMENSIONS IN MILLIMETRES (DIMENSIONS IN FEET-INCHES)



PAGE 1 OF 2

ALL DIMENSIONS AND DESIGN CRITERIA SUBJECT TO CHANGE WITHOUT NOTICE

FILE NO. 178-2085 REV. 0