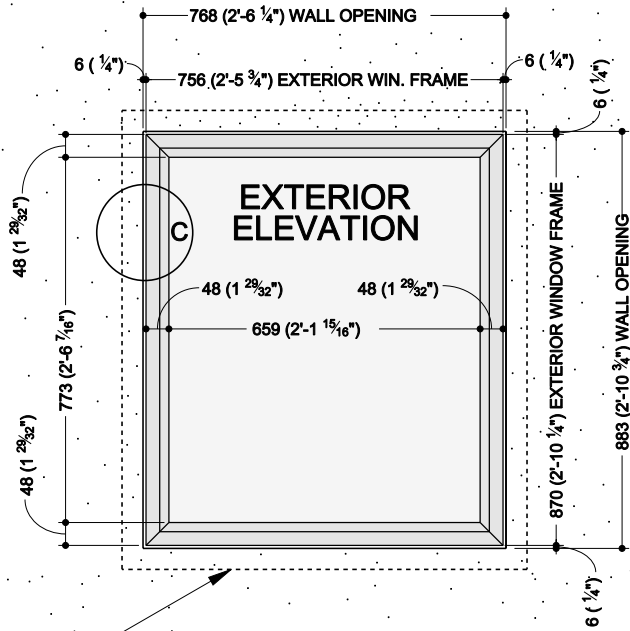
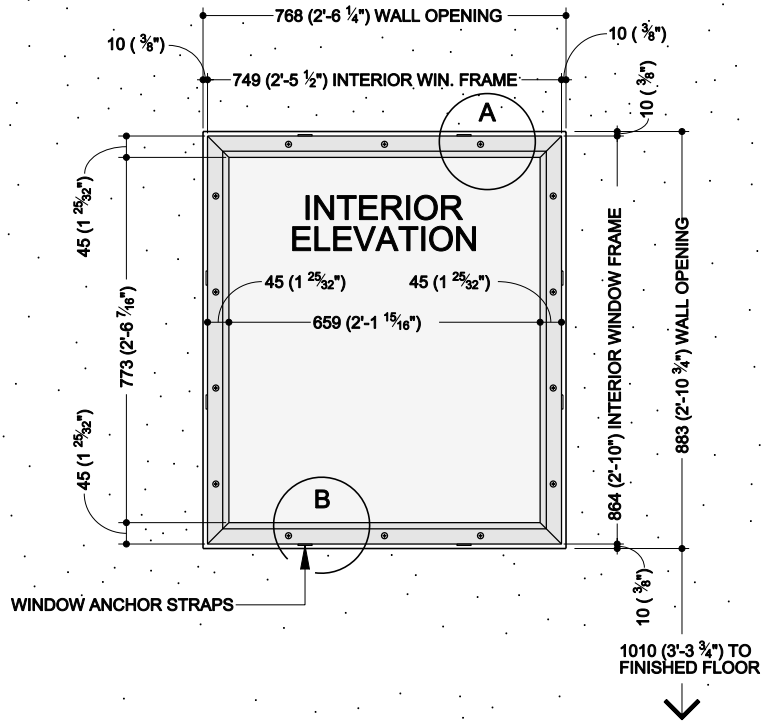
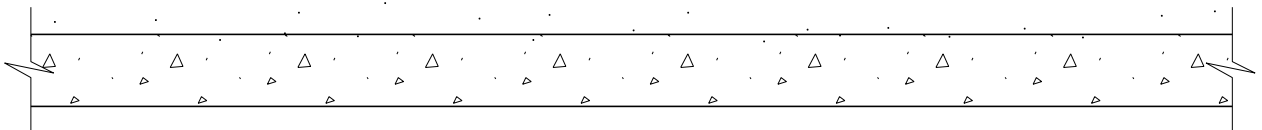


DIMENSIONS IN MILLIMETRES  
(DIMENSIONS IN FEET-INCHES)



PROVIDE 44mm (1 3/4") VERTICAL AND HORIZONTAL  
FLAT PLUMB SURFACE AROUND WALL OPENING  
FOR PROPER INSTALLATION OF WINDOW.



**NOTE: A**

HOLD 13 ( 1/2" ) ( AT TOP OF WINDOW ) FROM EXTERIOR WALL FINISH TO WINDOW FRAME AND 76 (3") (AT BOTTOM OF WINDOW) FROM EXTERIOR WALL FINISH TO WINDOW FRAME.

**NOTE: B**

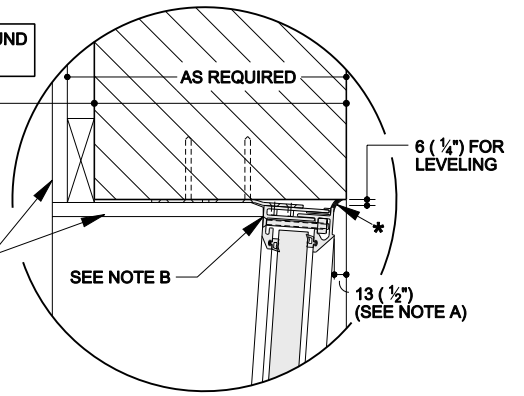
FINISH AND WINDOW SILL MUST NOT COVER ANY PART OF WINDOW FRAME FLAT HEAD SCREWS.

**NOTE: C**

FOR SPECIFIC INFORMATION ON REGULATORY REQUIREMENTS AND CERTIFICATION, REFER TO SECTION 1.2 AND APPENDIX A OF THE 234 SERIES PRE-ASSEMBLED FIXED WINDOW INSTALLATION AND PARTS MANUAL (TP-821324-00-A). THESE SECTIONS ADDRESS SPECIFIC HURRICANE INSTALLATION REQUIREMENTS SUCH AS MINIMUM NUMBER OF FASTENERS, FASTENER SIZE, TYPE, SPACING, ETC.

\* CAULK CONTINUOUS AROUND FRAME BY OWNER'S G.C.

MINIMUM WALL THICKNESS:  
 • 229 (9") FOR WOOD OR METAL STUD WALLS  
 • 260 (10 1/4") FOR MASONRY WALLS



**DETAIL "A"**

**SPECIFICATIONS:**

**FINISH:**

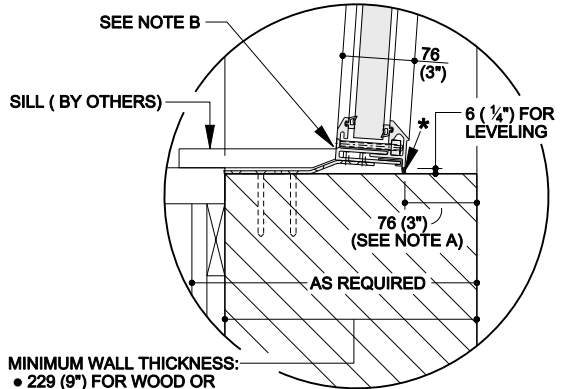
- INTERIOR — BLACK POWDER COAT
- EXTERIOR — BLACK POWDER COAT

**GLASS:**

LEVEL ONE - MEDIUM POWER SMALL ARMS

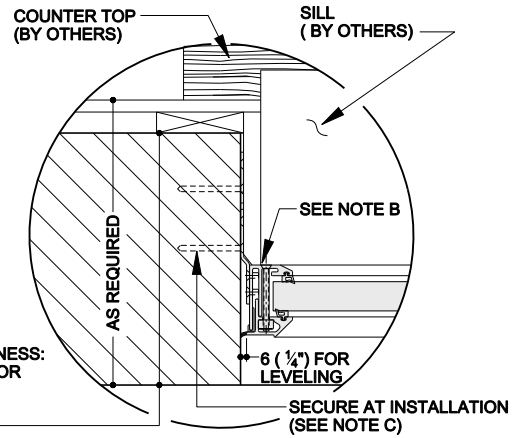
**OPTIONAL EXTRAS FOR WINDOW**

- B.R. GLASS COLORS:  GRAY  GREEN  SOLAR BRONZE
- COUNTERTOP HEAT
- LIGHT FIXTURE



**DETAIL "B"**

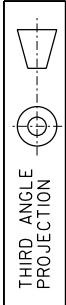
MINIMUM WALL THICKNESS:  
 • 229 (9") FOR WOOD OR METAL STUD WALLS  
 • 260 (10 1/4") FOR MASONRY WALLS



**DETAIL "C"**

MINIMUM WALL THICKNESS:  
 • 229 (9") FOR WOOD OR METAL STUD WALLS  
 • 260 (10 1/4") FOR MASONRY WALLS

DIMENSIONS IN MILLIMETRES  
(DIMENSIONS IN FEET-INCHES)

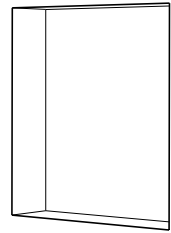


CALL 1-800-999-3600

### WINDOW OPTIONS

FOR DETAILS ON THE WINDOW OPTIONS, SEE APPROPRIATE CUT SHEET

- LIGHT FIXTURE:  
SEE CUT SHEET FILE NO. 178-2042
- COUNTERTOP HEAT:  
SEE CUT SHEET FILE NO. 178-2044

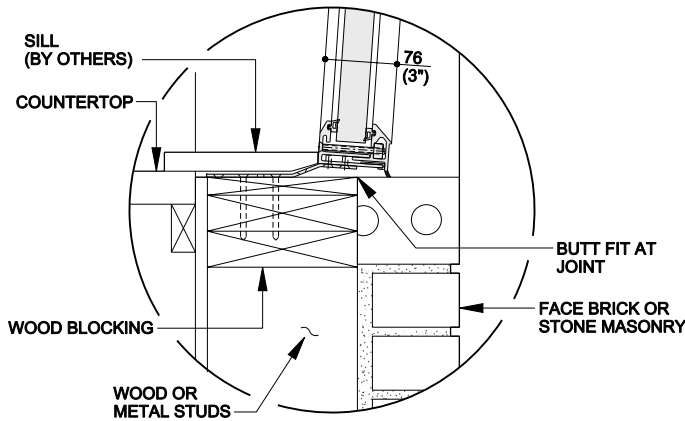


DIMENSIONS IN MILLIMETRES  
(DIMENSIONS IN FEET-INCHES)

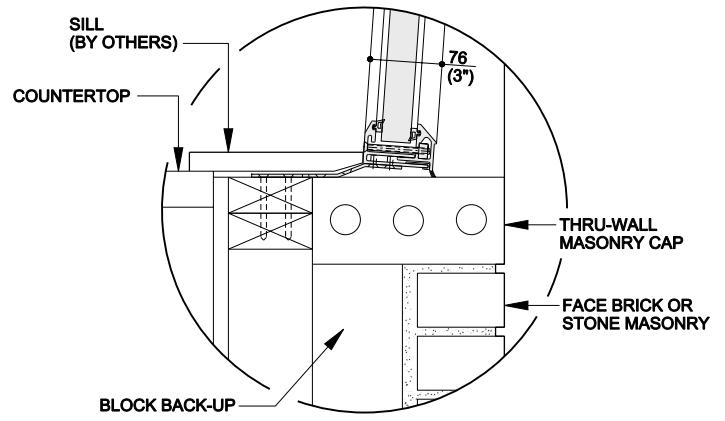


THIRD ANGLE  
PROJECTION

### INTERIOR PERSPECTIVE



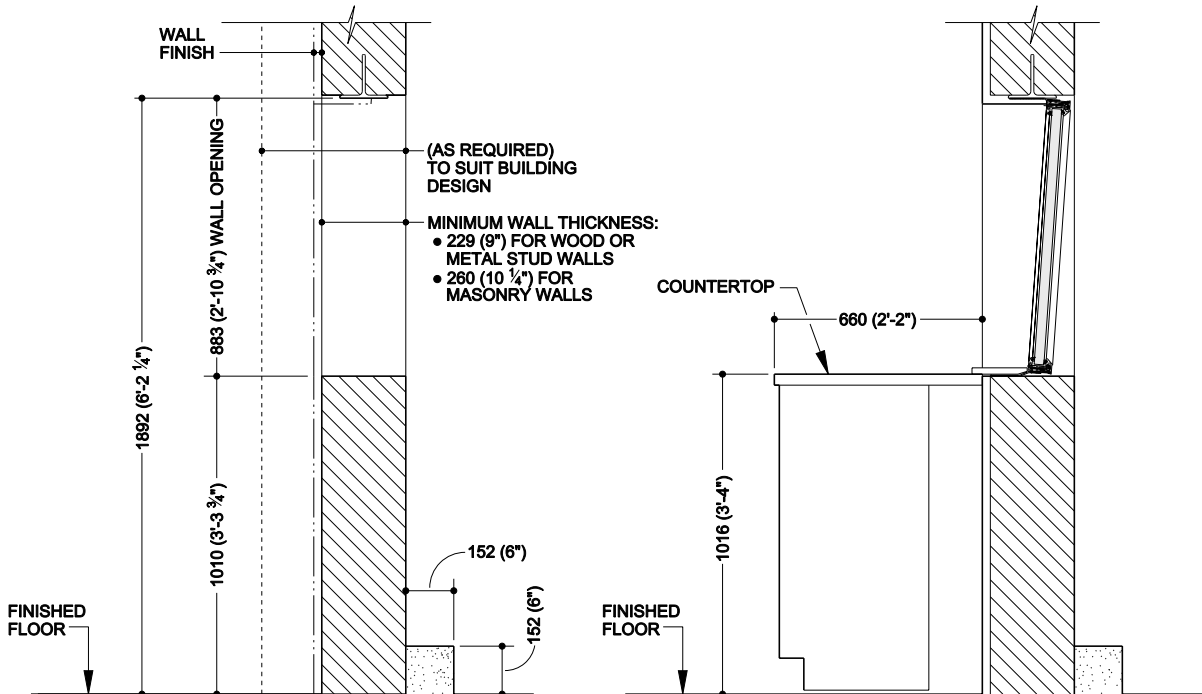
TYPICAL MASONRY VENEER INSTALLATION

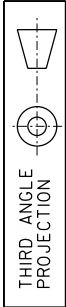


TYPICAL MASONRY INSTALLATION

### (A) SECTION OF WALL OPENING AND WINDOW

ROADWAY SHOWN AT SAME LEVEL AS INSIDE FLOOR LEVEL





**A SECTION OF WALL OPENING AND WINDOW**  
ROADWAY SHOWN 152mm (6") LOWER THAN INSIDE FLOOR LEVEL (RECOMMENDED NEW CONSTRUCTION METHOD)

