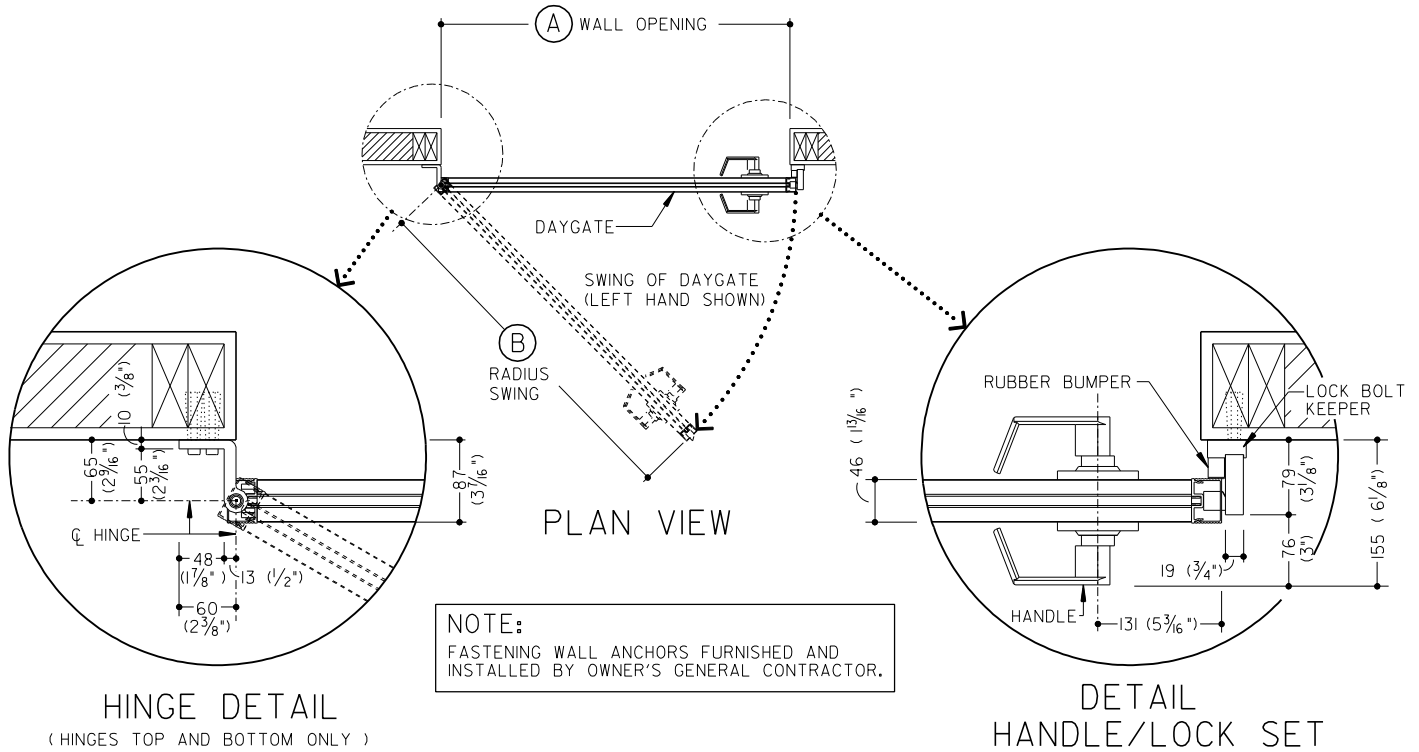
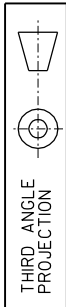
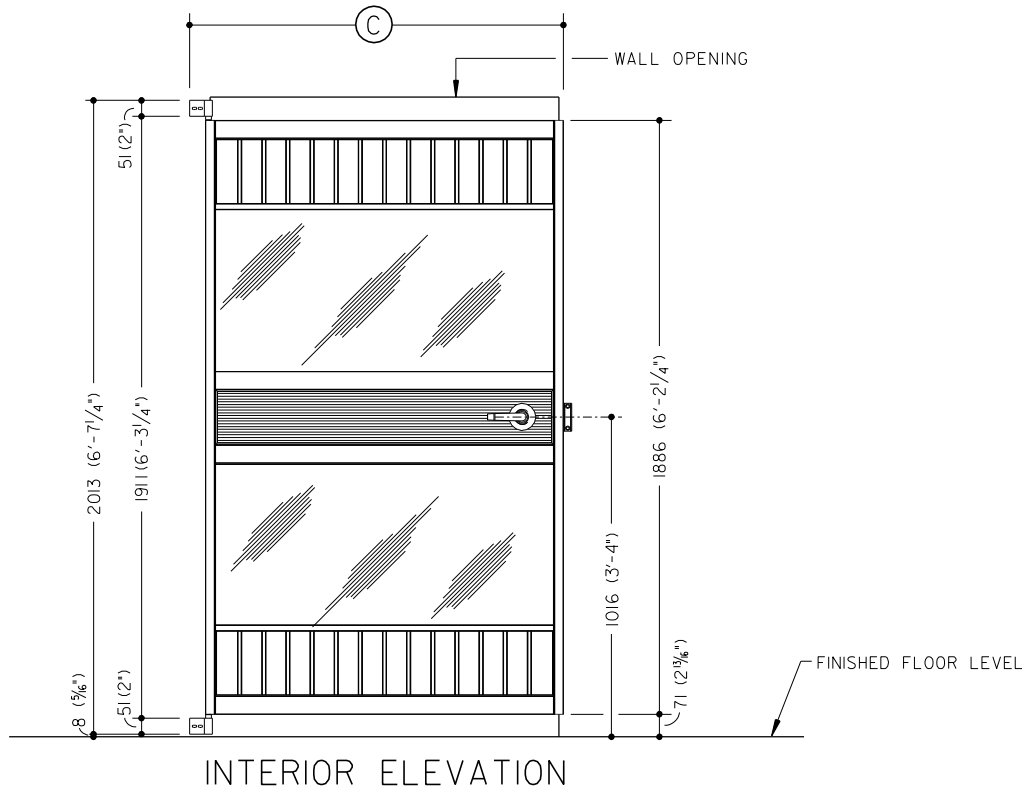


DIMENSIONS IN MILLIMETRES
(DIMENSIONS IN FEET-INCHES)



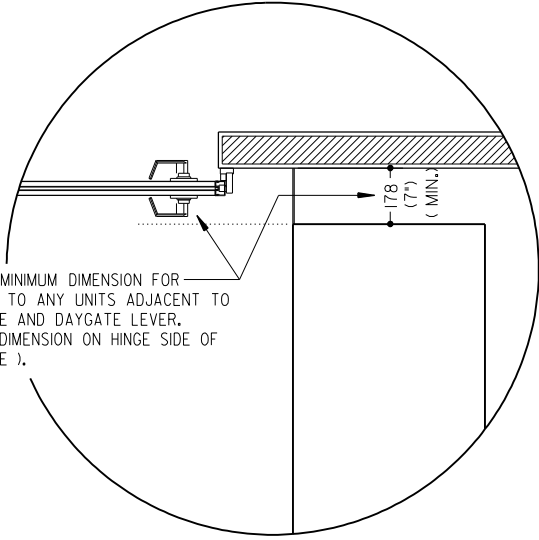
DAYGATE USED WITH PARTITION WALLS

| DAYGATE MODEL NUMBER | "A" DIMENSION | "B" DIMENSION | "C" DIMENSION | WEIGHT |
|------------------------------------|--|---|--|--------------------|
| 223-80 ALUMINUM ROD/TEMPERED GLASS | 1108 (3'-7 ⁵ / ₈ "*) | 1127 (3'-8 ³ / ₈ "*) | 1187 (3'-10 ³ / ₄ "*) | 34kg (75 LBS.) |
| 223-82 ALUMINUM ROD/TEMPERED GLASS | 1514 (4'-11 ⁵ / ₈ "*) | 1534 (5'-0 ³ / ₈ "*) | 1594 (5'-2 ³ / ₄ "*) | 48kg (105 LBS.) |



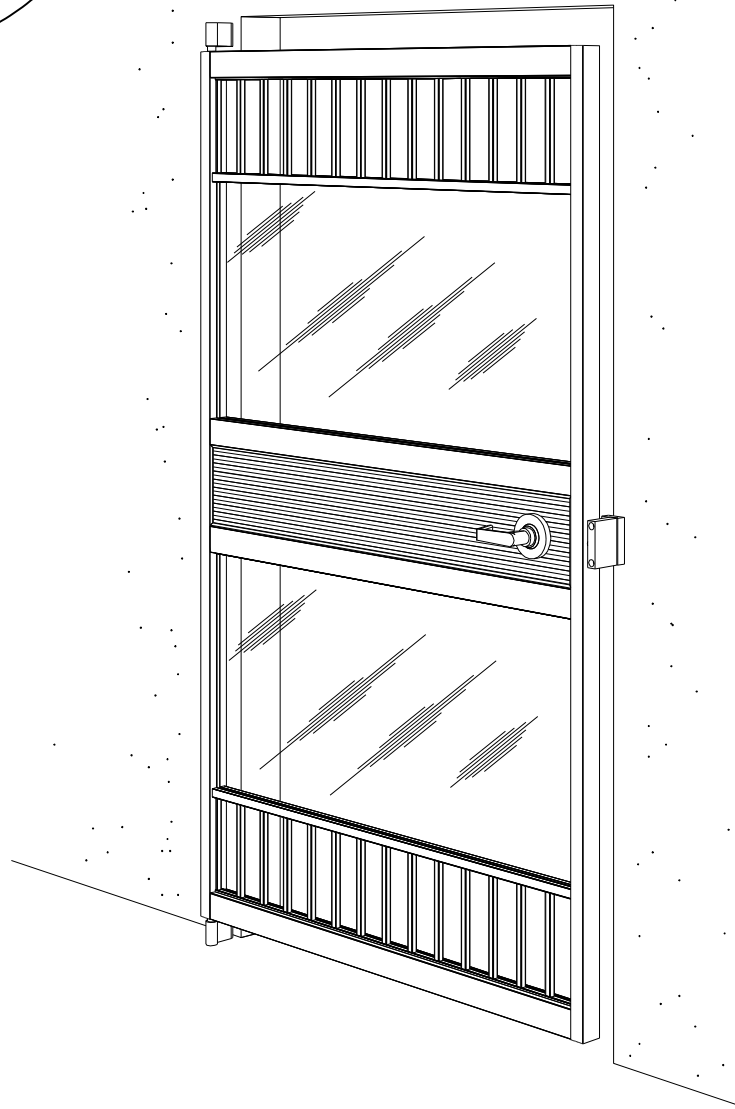


DIMENSIONS IN MILLIMETRES
(DIMENSIONS IN FEET-INCHES)



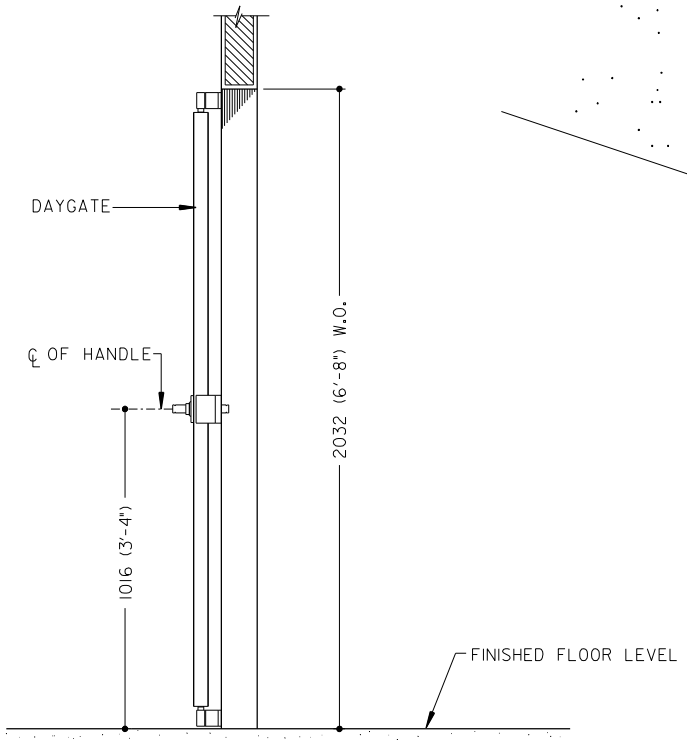
178 (7\") MINIMUM DIMENSION FOR
ACCESS TO ANY UNITS ADJACENT TO
DAYGATE AND DAYGATE LEVER.
(SAME DIMENSION ON HINGE SIDE OF
DAYGATE).

DETAIL
(CLEARANCE)



PERSPECTIVE

*ALL DIMENSIONS AND DESIGN CRITERIA
SUBJECT TO CHANGE WITHOUT NOTICE.*



SIDE VIEW