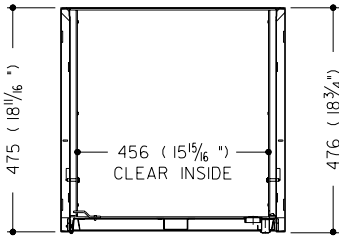
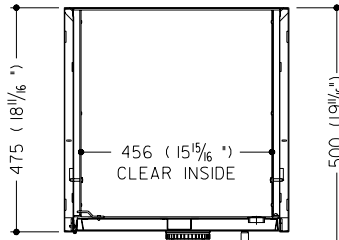


DIMENSIONS IN MILLIMETRES
(DIMENSIONS IN INCHES)

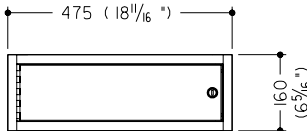
MODEL	OUTSIDE DIMENSIONS				INSIDE DIMENSIONS			SHIPPING WEIGHT kg. (LBS.)
	WIDE	HIGH	DEEP	W/HANDLE	WIDE	HIGH	DEEP	
40530	475 (18 ¹¹ / ₁₆ ")	870 (34 ¹ / ₄ ")	475 (18 ¹¹ / ₁₆ ")	506 (19 ⁵ / ₁₆ ")	456 (15 ⁵ / ₁₆ ")	799 (31 ⁷ / ₁₆ ")	425 (16 ³ / ₄ ")	129 kg (285 LBS.)
TOP 40531 BOTTOM	475 (18 ¹¹ / ₁₆ ")	870 (34 ¹ / ₄ ")	475 (18 ¹¹ / ₁₆ ")	506 (19 ⁵ / ₁₆ ")	456 (15 ⁵ / ₁₆ ")	289 (11 ³ / ₈ ")	425 (16 ³ / ₄ ")	118 kg (260 LBS.)
						459 (18 ¹ / ₁₆ ")		
40532	475 (18 ¹¹ / ₁₆ ")	870 (34 ¹ / ₄ ")	475 (18 ¹¹ / ₁₆ ")	500 (19 ¹ / ₁₆ ")	456 (15 ⁵ / ₁₆ ")	106 (4 ³ / ₁₆ ")	416 (16 ³ / ₈ ")	99 kg (219 LBS.)
40534	475 (18 ¹¹ / ₁₆ ")	435 (17 ⁷ / ₈ ")	475 (18 ¹¹ / ₁₆ ")	506 (19 ⁵ / ₁₆ ")	456 (15 ⁵ / ₁₆ ")	364 (14 ⁵ / ₁₆ ")	425 (16 ³ / ₄ ")	66 kg (145 LBS.)
40535	475 (18 ¹¹ / ₁₆ ")	435 (17 ⁷ / ₈ ")	475 (18 ¹¹ / ₁₆ ")	506 (19 ⁵ / ₁₆ ")	456 (15 ⁵ / ₁₆ ")	167 (6 ⁹ / ₁₆ ")	425 (16 ³ / ₄ ")	66 kg (145 LBS.)
40536	475 (18 ¹¹ / ₁₆ ")	302 (11 ⁷ / ₈ ")	475 (18 ¹¹ / ₁₆ ")	500 (19 ¹ / ₁₆ ")	456 (15 ⁵ / ₁₆ ")	106 (4 ³ / ₁₆ ")	416 (16 ³ / ₈ ")	43 kg (94 LBS.)
40537	475 (18 ¹¹ / ₁₆ ")	160 (6 ⁵ / ₁₆ ")	475 (18 ¹¹ / ₁₆ ")	500 (19 ¹ / ₁₆ ")	456 (15 ⁵ / ₁₆ ")	103 (4 ¹ / ₁₆ ")	416 (16 ³ / ₈ ")	27 kg (59 LBS.)



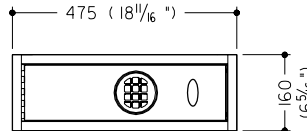
TYPICAL PLAN VIEW
(WITH KEY LOCK)



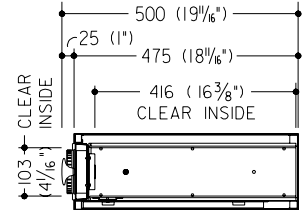
TYPICAL PLAN VIEW
(WITH COMBINATION LOCK & HANDLE)



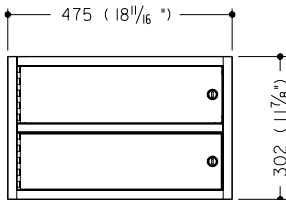
40537-L77K
40537-LSSK



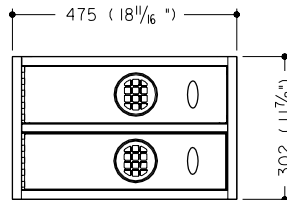
40537-L77Y
40537-LSSY



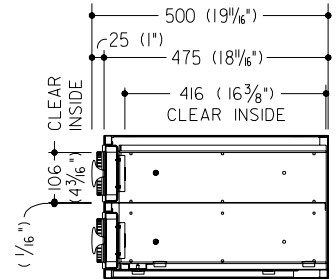
SECTION



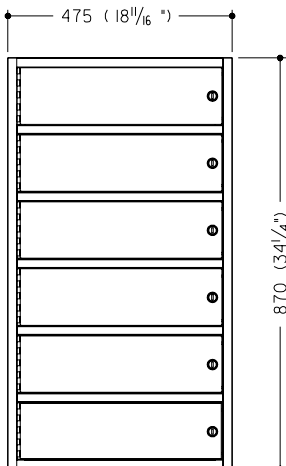
40536-L77K
40536-LSSK



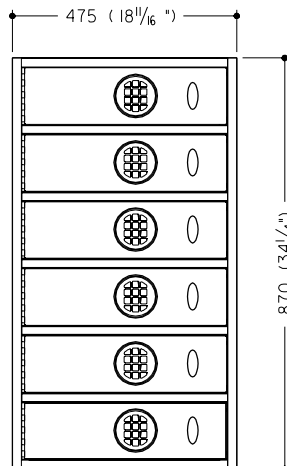
40536-L77Y
40536-LSSY



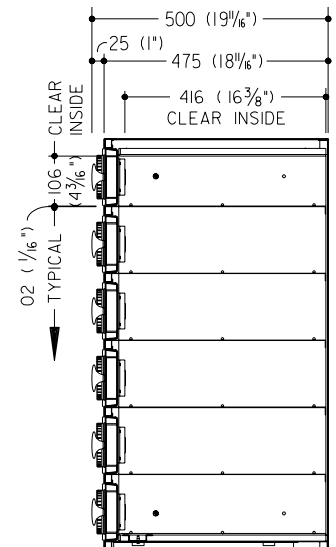
SECTION



40532-L77K
40532-LSSK



40532-L77Y
40532-LSSY



SECTION



SPECIFICATIONS

CONSTRUCTION:

BODY: — 11 ga. INNER SECURITY (INNER AND DOUBLE WALL SHEET METAL BODY)

DOORS: — REINFORCED SHEET METAL (40532, 40536 & 40537)
1/2" SOLID STEEL (40530, 40531, 40534 & 40535)

LOCKS:

COMBINATION LOCKS:

MODELS: 40530
40531
40532
40534
40535
40536
40537

STANDARD REMOVABLE CORE KEYLOCKS:

MODELS: 40532
40536
40537

ADJUSTABLE SHELVES: (SUPPORTS 200 LBS.)

MODELS: 40530 (2) SHELVES
40531 (2) SHELVES
40534 (1) SHELF

STANDARD FINISHES:

BODY AND

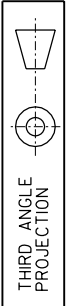
DOORS: — PAINTED PLATINUM

OPTION: — BODY AND DOORS PAINTED PLATINUM WITH
POLISHED STAINLESS STEEL CLAD DOOR FRONTS

MODEL SUFFIX DESCRIPTIONS (MODEL NO. -X-XX-X)

R = RIGHT SWING DOOR
L = LEFT SWING DOOR
K = SINGLE KEY LOCK
02K = TWO KEY LOCKS
W = MECHANICAL OR ELECTRONIC COMBINATION LOCK
Y = MECHANICAL OR ELECTRONIC COMBINATION LOCK
SS = STAINLESS STEEL DOOR FINISH
77 = PLATINUM PAINTED DOOR

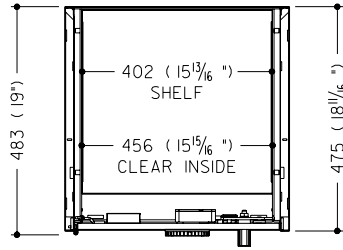
DIMENSIONS IN MILLIMETRES
(DIMENSIONS IN INCHES)



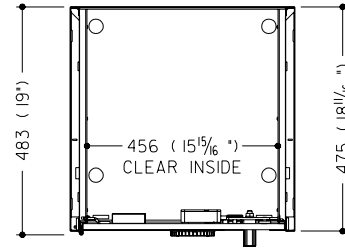
THIRD ANGLE
PROJECTION

CALL 1-800-999-3600

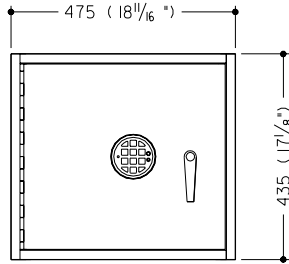
DIMENSIONS IN MILLIMETRES
(DIMENSIONS IN INCHES)



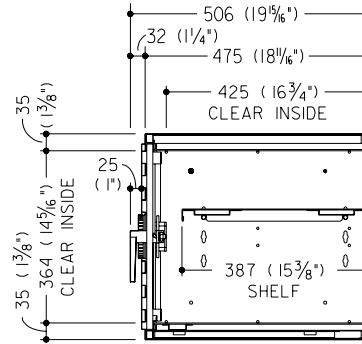
TYPICAL SECTION WITH SHELF



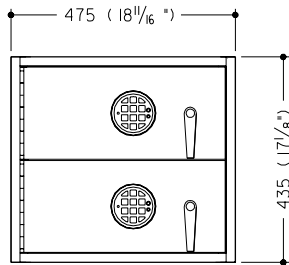
TYPICAL SECTION WITHOUT SHELF



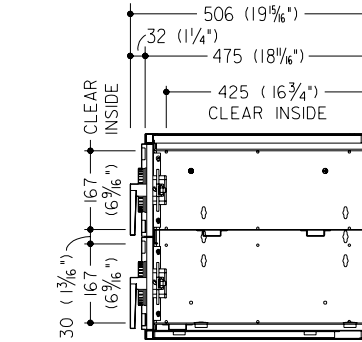
40534-L 77W
40534-LSSW



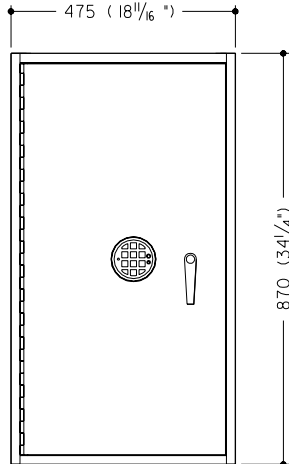
SECTION



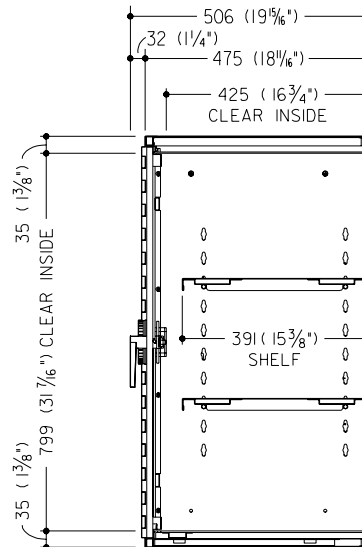
40535-L 77W
40535-LSSW



SECTION



40530-L 77W
40530-LSSW

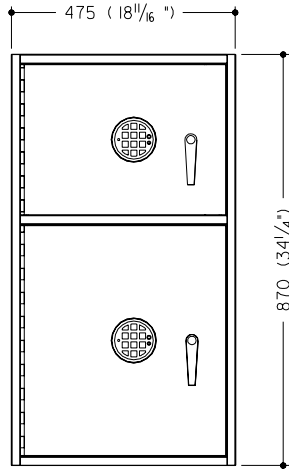


SECTION

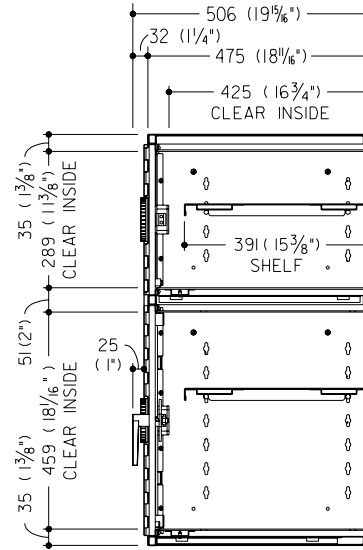


MODEL	OUTSIDE DIMENSIONS				INSIDE DIMENSIONS			SHIPPING WEIGHT kg. (LBS.)
	WIDE	HIGH	DEEP	W/HANDLE	WIDE	HIGH	DEEP	
40530	475 (18 ¹¹ / ₁₆ ")	870 (34 ¹ / ₄ ")	475 (18 ¹¹ / ₁₆ ")	506 (19 ⁵ / ₁₆ ")	456 (15 ⁵ / ₁₆ ")	799 (31 ⁷ / ₁₆ ")	425 (16 ³ / ₄ ")	129 kg (285 LBS.)
TOP 40531 BOTTOM	475 (18 ¹¹ / ₁₆ ")	870 (34 ¹ / ₄ ")	475 (18 ¹¹ / ₁₆ ")	506 (19 ⁵ / ₁₆ ")	456 (15 ⁵ / ₁₆ ")	289 (11 ³ / ₈ ") 459 (18 ¹ / ₁₆ ")	425 (16 ³ / ₄ ")	118 kg (260 LBS.)
40532	475 (18 ¹¹ / ₁₆ ")	870 (34 ¹ / ₄ ")	475 (18 ¹¹ / ₁₆ ")	500 (19 ¹ / ₁₆ ")	456 (15 ⁵ / ₁₆ ")	106 (4 ³ / ₁₆ ")	416 (16 ³ / ₈ ")	99 kg (219 LBS.)
40534	475 (18 ¹¹ / ₁₆ ")	435 (17 ¹ / ₈ ")	475 (18 ¹¹ / ₁₆ ")	506 (19 ⁵ / ₁₆ ")	456 (15 ⁵ / ₁₆ ")	364 (14 ⁵ / ₁₆ ")	425 (16 ³ / ₄ ")	66 kg (145 LBS.)
40535	475 (18 ¹¹ / ₁₆ ")	435 (17 ¹ / ₈ ")	475 (18 ¹¹ / ₁₆ ")	506 (19 ⁵ / ₁₆ ")	456 (15 ⁵ / ₁₆ ")	167 (6 ⁷ / ₁₆ ")	425 (16 ³ / ₄ ")	66 kg (145 LBS.)
40536	475 (18 ¹¹ / ₁₆ ")	302 (11 ⁷ / ₈ ")	475 (18 ¹¹ / ₁₆ ")	500 (19 ¹ / ₁₆ ")	456 (15 ⁵ / ₁₆ ")	106 (4 ³ / ₁₆ ")	416 (16 ³ / ₈ ")	43 kg (94 LBS.)
40537	475 (18 ¹¹ / ₁₆ ")	160 (6 ⁵ / ₁₆ ")	475 (18 ¹¹ / ₁₆ ")	500 (19 ¹ / ₁₆ ")	456 (15 ⁵ / ₁₆ ")	103 (4 ¹ / ₁₆ ")	416 (16 ³ / ₈ ")	27 kg (59 LBS.)

DIMENSIONS IN MILLIMETRES
(DIMENSIONS IN INCHES)



40531-L77W
40531-LSSW



SECTION