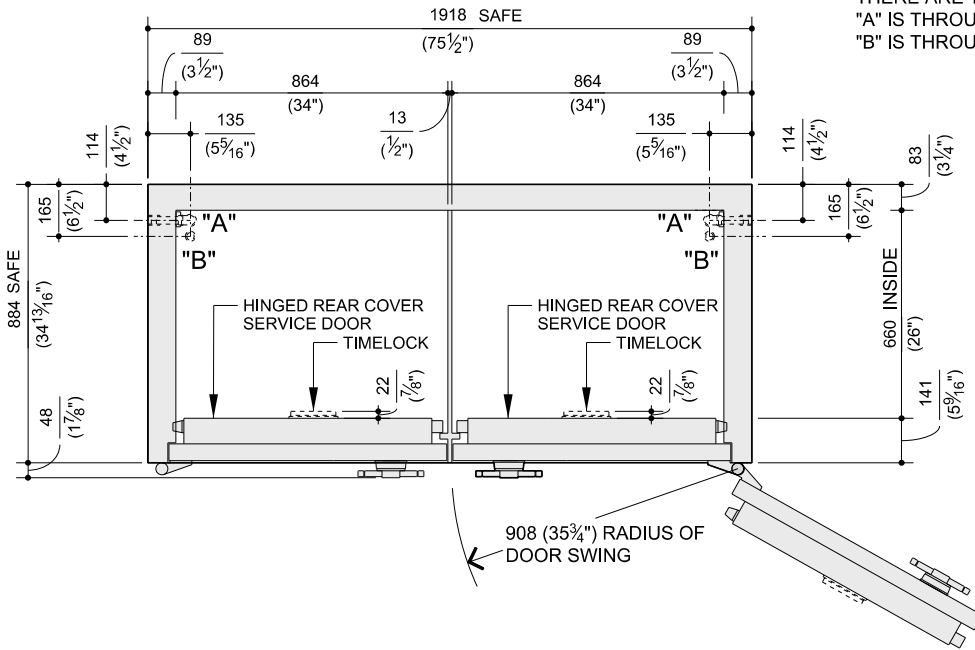
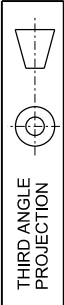


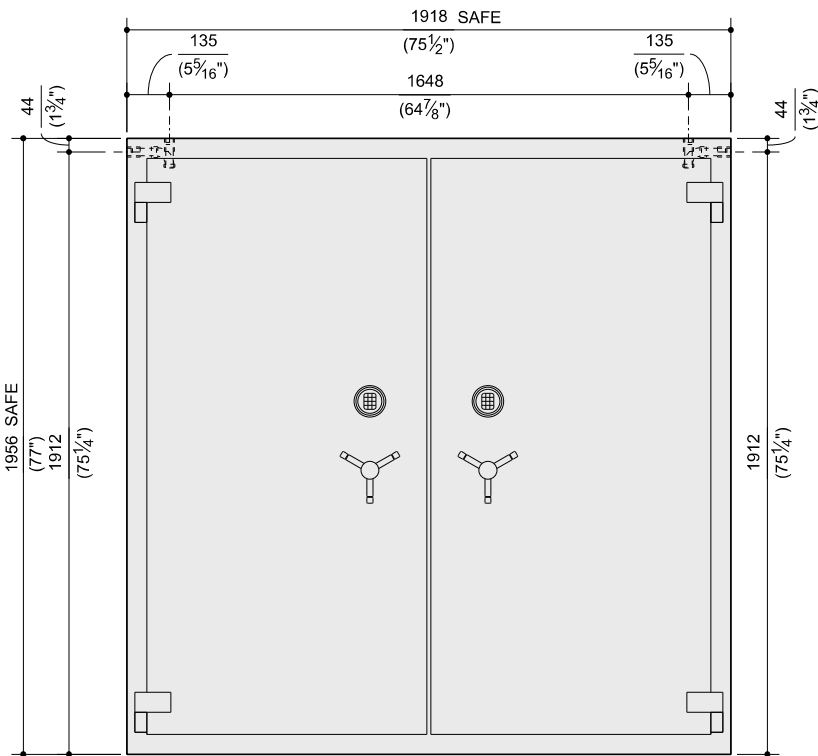
**NOTE:**

THERE ARE TWO CONDUIT ENTRIES INTO THE SAFE "A" AND "B".  
 "A" IS THROUGH SIDE OF SAFE ON HINGE SIDE.  
 "B" IS THROUGH TOP OF SAFE ON HINGE SIDE.

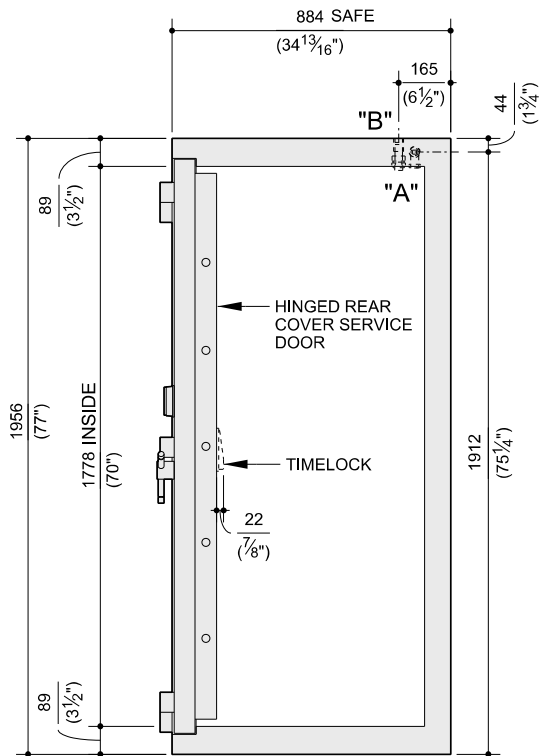
DIMENSIONS IN MILLIMETRES  
(DIMENSIONS IN INCHES)



**PLAN/SECTION VIEW**

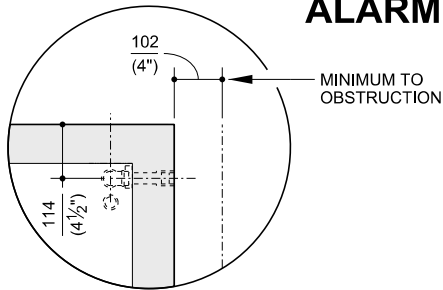


**FRONT VIEW**

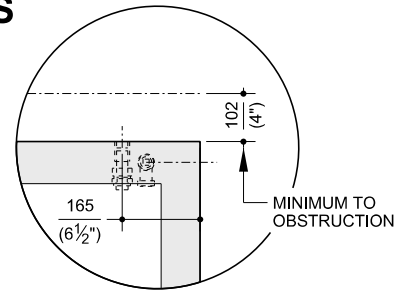


**SIDE/SECTION VIEW**

# ALARM CONNECTION OPTIONS



**DETAIL "C"-SIDE**  
TYPICAL EACH SIDE OF SAFE



**DETAIL "D"-TOP**

DIMENSIONS IN MILLIMETRES  
(DIMENSIONS IN INCHES)



THIRD ANGLE  
PROJECTION

## SPECIFICATIONS:

- SAFE BODY:** MASSIVE BODY CONSTRUCTION, CONSISTING OF OUTER AND INNER STEEL PLATES AND LINERS ENCLOSING THE SAME HIGH SECURITY COMPOSITE MIX AS THE DOOR. BODY IS COMPLETELY ENCASED WITH NO EXPOSED COMPOSITE SURFACES.
- SAFE DOOR:** 136mm (5 3/8") THICK COMPOSITE DOOR UTILIZING OUTER AND INNER STEEL PLATES ENCLOSING A HIGH DENSITY PROPRIETARY COMPOSITE MIXTURE.
- LOCKING MECHANISM:** UL GROUP 1 ELECTRONIC COMBINATION LOCK IS STANDARD, THE LOCK HAS CAPABILITIES FOR DUAL CONTROL, DURESS AND TIME DELAY. ALL OPTIONAL LOCKS MUST BE FIELD INSTALLED.  
HANDLE ACTIVATED LOCKING MECHANISM CONSISTING OF FIVE EACH 25mm (1") DIA. CHROME STEEL LOCKING BOLTS. BOLTS RETRACT INTO STEEL PROTECTED BOLT CAPS.  
BOLT DETENT KEEPS LOCKING BOLTS RETRACTED WHILE DOOR IS IN THE OPEN POSITION.  
DUAL AUXILIARY SPRING LOADED RELOCKING DEVICE, ACTIVATED BY A PUNCHING ATTACK.  
MASSIVE SOLID STEEL DEAD BOLTS PREVENT DOOR REMOVAL IF HINGES ARE REMOVED DURING A FORCED ENTRY ATTEMPT.
- RATINGS:** UNDERWRITER'S LABORATORIES TL-30 BURGLAR RATED.  
MANUFACTURER'S CLASS 350 DEGREE 2-HOUR FIRE PROTECTION.  
INSURANCE SERVICES OFFICE (ISO) MERCANTILE "F"; BANK RATING "G"
- WEIGHT:** 3,096kg (6,825 LBS.)  
DOES NOT INCLUDE INTERIORS
- VOLUME:** 61,880 CUBIC INCHES PER COMPARTMENT

## STANDARD OPTIONS:

- DOOR SWING:** RIGHT OR LEFT SWING
- EXTERIOR SURFACE COLOR:** PLATINUM (STANDARD), DAWN, GRAY 1, PLAZA GRAY AND BLACK

## OPTIONAL EXTRAS:

- 144 HOUR MECHANICAL TIME LOCKS (TWO MOVEMENT AND THREE MOVEMENT AVAILABLE).  
ADJUSTABLE SHELVES - MAXIMUM CAPACITY 45kg (100 LBS.).  
FIXED SHELVES - MAXIMUM CAPACITY 227kg (500 LBS.).  
DOOR AND BODY ALARM PACKAGES FEATURING SEISMIC, HEAT THERMAL, SOUND DETECTION AND DOOR CONTACTS.  
SPECIAL SAFE EXTERIOR SURFACE COLORS AVAILABLE (INTERIOR SURFACES IN PLATINUM ONLY).

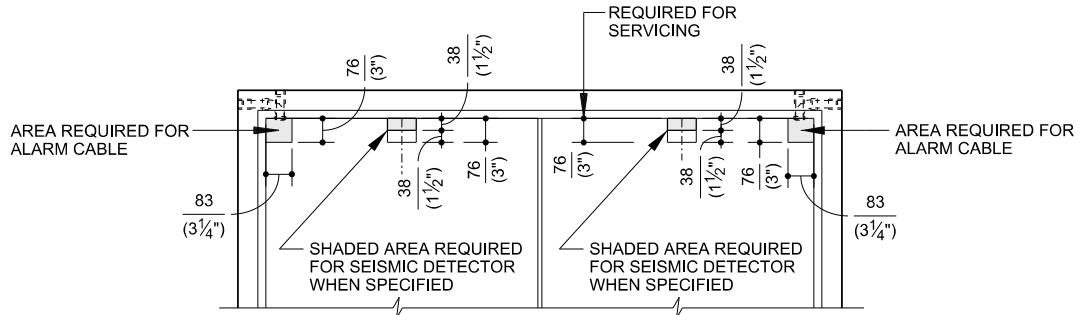
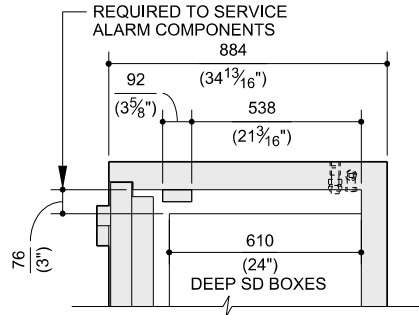
## ALARM OPTIONS

TYPE OF PROTECTION	DESCRIPTION						
	* "COMPLETE PROTECTION" & "PARTIAL PROTECTION" ARE UNDERWRITERS LABORATORIES (UL) TERMS.						
	FOR PARTIAL* AND ALARM PROTECTION WITH HEAD CONTACT 41-014047-001A	FOR PARTIAL* MONEY SAFE ALARM PROTECTION 41-014047-001A	FOR COMPLETE* AND ALARM PROTECTION W/SEISMIC AND HEAD CONTACT 41-014047-001B	FOR COMPLETE* AND ALARM PROTECTION W/LACING AND HEAD CONTACT 41-014047-001C	FOR COMPLETE* MONEY SAFE ALARM PROTECTION WITH SOUND 41-014047-001E	FOR COMPLETE* MONEY SAFE ALARM PROTECTION WITH SEISMIC 41-014047-001F	FOR DOOR CORD FOR CONNECTION TO LOCK 41-014047-001G
DOOR CONTACT	X	X	X	X	X	X	
HEAT THERMO	X	X	X	X	X	X	
LOCK WITH BOLT SENSOR	O	O	O	O	O	O	O
SOUND DETECTOR					X		
SEISMIC DOOR AND BODY			X			X	
LACING HEAD & CHUTE ONLY			X				
LACING ENTIRE UNIT				X			
SEISMIC DOOR ONLY				X			

**X = STANDARD FEATURES**  
**O = OPTIONS**

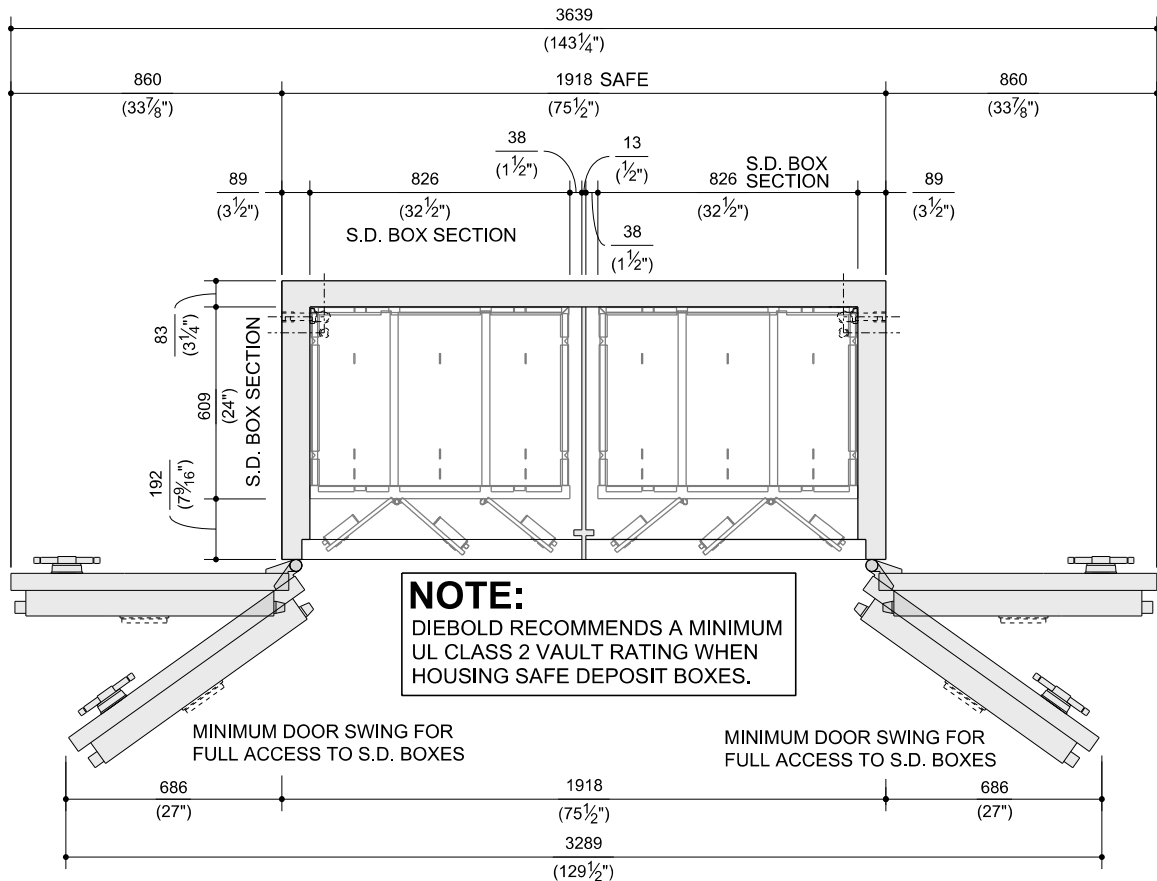
CALL 1-800-999-3600

DIMENSIONS IN MILLIMETRES  
(DIMENSIONS IN INCHES)



**SERVICE REQUIREMENTS FOR ALARM OPTION**

\*ALL DIMENSIONS AND DESIGN CRITERIA  
SUBJECT TO CHANGE WITHOUT NOTICE\*



**PLAN/SECTION VIEW WITH SAFE  
DEPOSIT BOX INTERIORS**