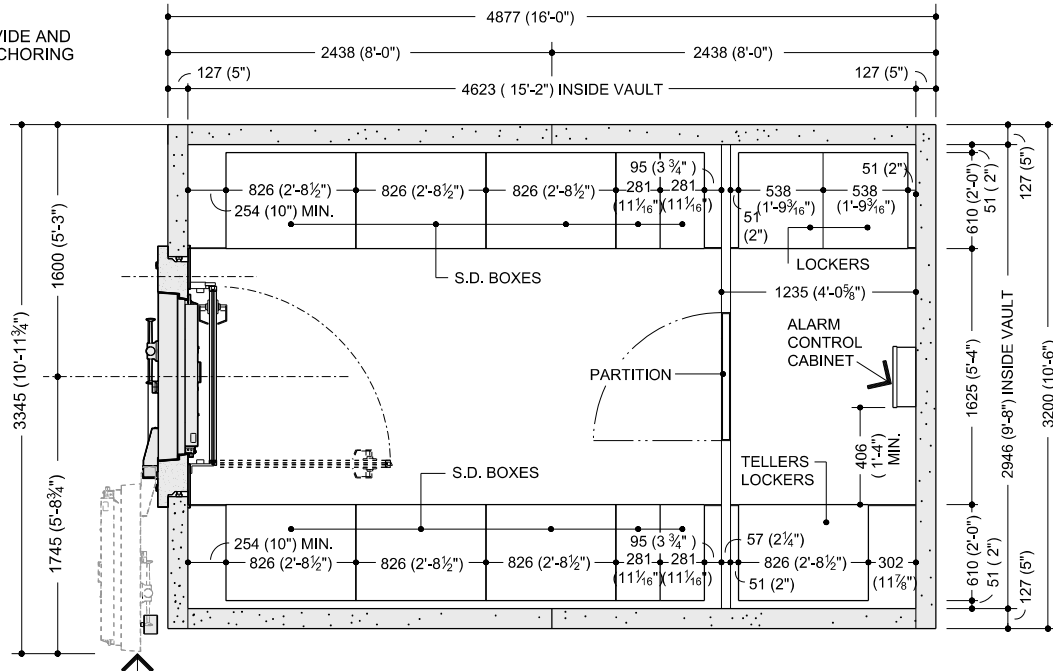
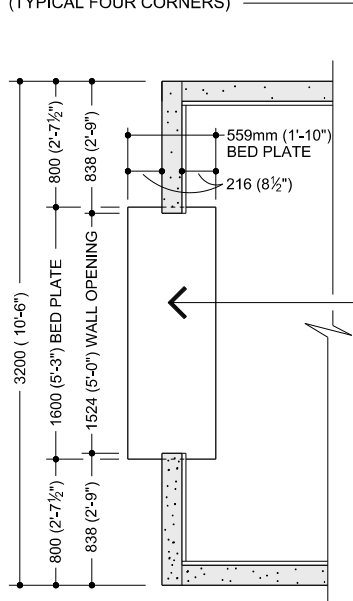
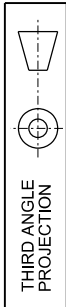


NOTE:

OWNERS GENERAL CONTRACTOR TO PROVIDE AND INSTALL BED PLATE WITH #5 ROD FOR ANCHORING (TYPICAL FOUR CORNERS)

DIMENSIONS IN MILLIMETRES
(DIMENSIONS IN FEET-INCHES)



PANEL CONSTRUCTION:

HIGH SECURITY REINFORCED MODULAR CONCRETE PANELS

PANEL CONNECTION:

BUTT JOINT AND WELDED

PANEL THICKNESS:

CLASS 1 127mm (5")

PANEL WEIGHT PER SQUARE FOOT:

CLASS 1 - 33kg (72 LBS.)

COMPRESSIVE STRENGTH:

11,500 PSI

UL LISTING:

CLASS 1 - 30 MINUTES

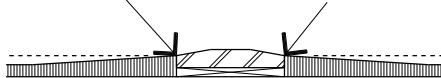
VAULT WEIGHT:

18,576kg. (40,953 LBS.)

VAULT DOOR WEIGHT:

1,950kg. (4,300 LBS.)

FINISH FLOOR MATERIAL INSIDE AND OUTSIDE VAULT SHOULD MEET OR BE FEATHERED TO THIS EDGE OF VAULT DOOR SILL PLATE



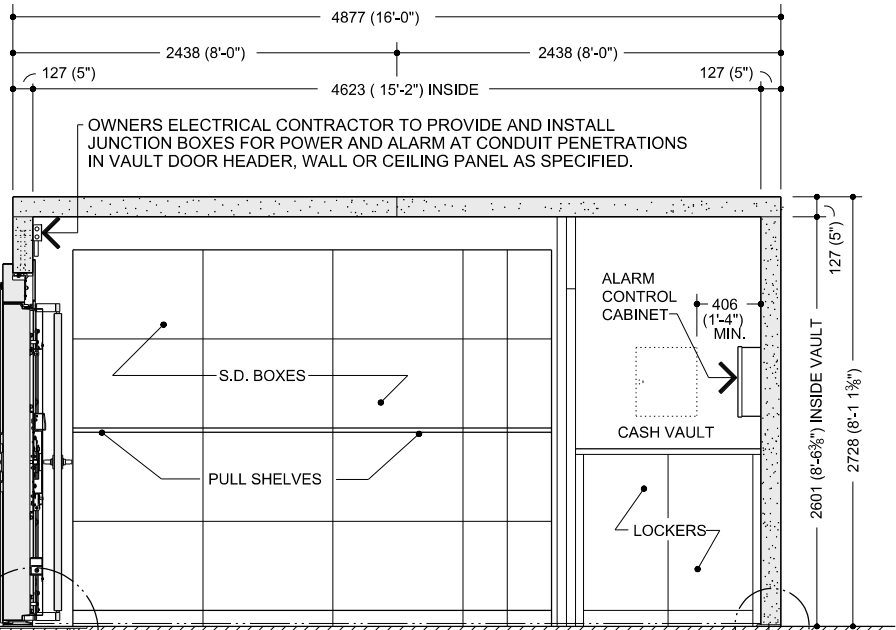
DETAIL "B"

NOTE:

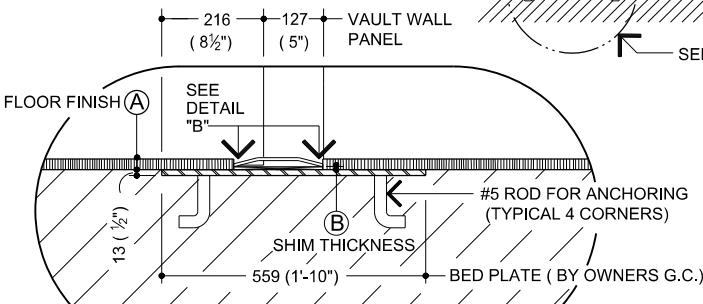
OWNERS G.C. TO VERIFY FLOOR COVERING THICKNESS TO BE APPLIED INSIDE AND OUTSIDE VAULT. OWNERS G.C. TO PREPARE FLOOR AS REQUIRED SO FINISHED FLOOR HEIGHT MEETS OR IS FEATHERED TO EDGE OF VAULT DOOR SILL HEIGHT, BUT DOES NOT EXCEED TOP OF SILL PLATE.

CLASS 1 CENTURY VAULT DOOR
MODEL #165-82 / #165-84 RAISED SILL

PLAN VIEW



SECTION/ELEVATION

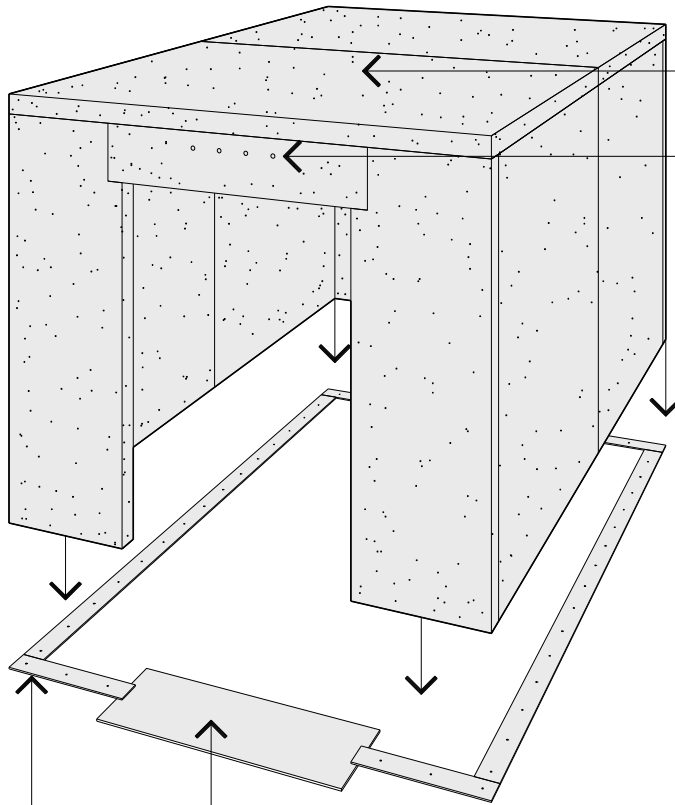
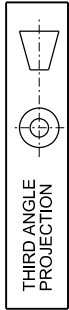


DETAIL "A" (#165-82 / #165-84 RAISED SILL)

(A) FLOOR FINISH THICKNESS	13 (1/2")	16 (5/8")	19 (3/4")	22 (7/8")	25 (1")
(B) SHIM THICKNESS	0 (0")	3 (1/8")	6 (1/4")	10 (3/8")	13 (1/2")



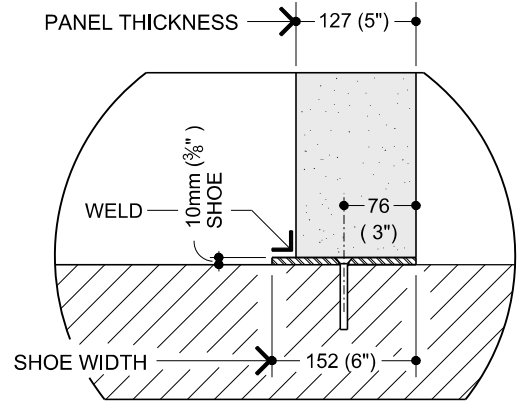
DIMENSIONS IN MILLIMETRES
(DIMENSIONS IN FEET-INCHES)



NOTE:
NO LIVE LOADS OF ANY KIND ARE PERMITTED ON ANY VAULT CEILING.

(4) 25mm (1") DIA. CONDUITS FOR POWER AND ALARM CONNECTIONS IN VAULT DOOR HEADER PANEL. THIS IS THE ONLY LOCATION AVAILABLE.

NOTE:
HVAC - PORT IS NOT AVAILABLE WITH THIS VAULT.



DETAIL "C"

BED PLATE 13mm (1/2") X 1600mm (5'-3") X 559mm (1'-10")
PROVIDED AND INSTALLED BY OWNERS GENERAL CONTRACTOR

SHOE PREFERRED (PROVIDED AND INSTALLED BY DIEBOLD OR OWNERS G.C.)
INSTALL SHOE 10mm X 152mm (3/8" X 6") TO FLOOR (SEE DETAIL "C")
OWNERS GENERAL CONTRACTOR TO PROVIDE OUTLINE OF VAULT PERIMETER FOR LOCATION OF SHOE.

PERSPECTIVE

SURFACE MOUNTED SHOE SHOWN (OVERLAPS BED PLATE)

CALL 1-800-999-3600

PANEL CONSTRUCTION:

HIGH SECURITY REINFORCED MODULAR CONCRETE PANELS

PANEL CONNECTION:

BUTT JOINT AND WELDED

PANEL THICKNESS:

CLASS 1 127mm (5")

PANEL WEIGHT PER SQUARE FOOT:

CLASS 1 - 33 kg (72 LBS.)

COMPRESSIVE STRENGTH:

11,500 PSI

UL LISTING:

CLASS 1 - 30 MINUTES

VAULT WEIGHT:

23,166kg. (51,073 LBS.)

VAULT DOOR WEIGHT:

1,950kg. (4,300 LBS.)

DIMENSIONS IN MILLIMETRES
(DIMENSIONS IN FEET-INCHES)



(SEE PAGE 4 OF 4)



CLASS 1 CENTURY VAULT DOOR
MODEL #165-82 / #165-84 RAISED SILL

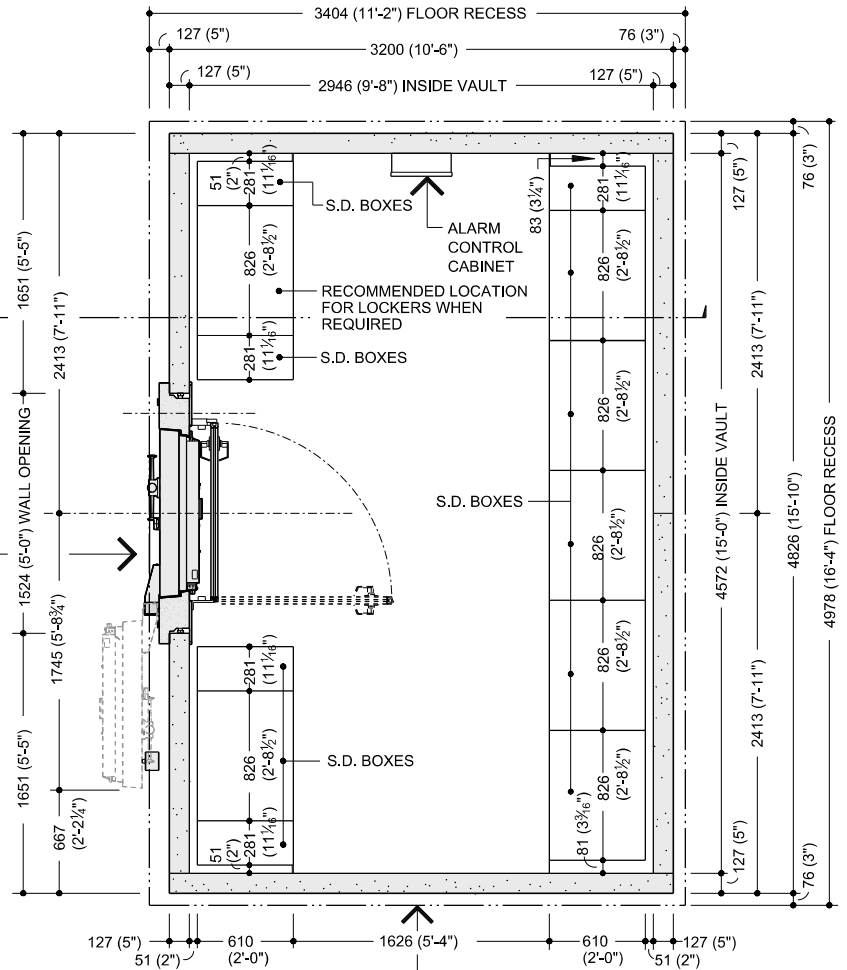
FINISH FLOOR MATERIAL INSIDE AND OUTSIDE
VAULT SHOULD MEET OR BE FEATHERED TO
THIS EDGE OF VAULT DOOR SILL PLATE



DETAIL "E"

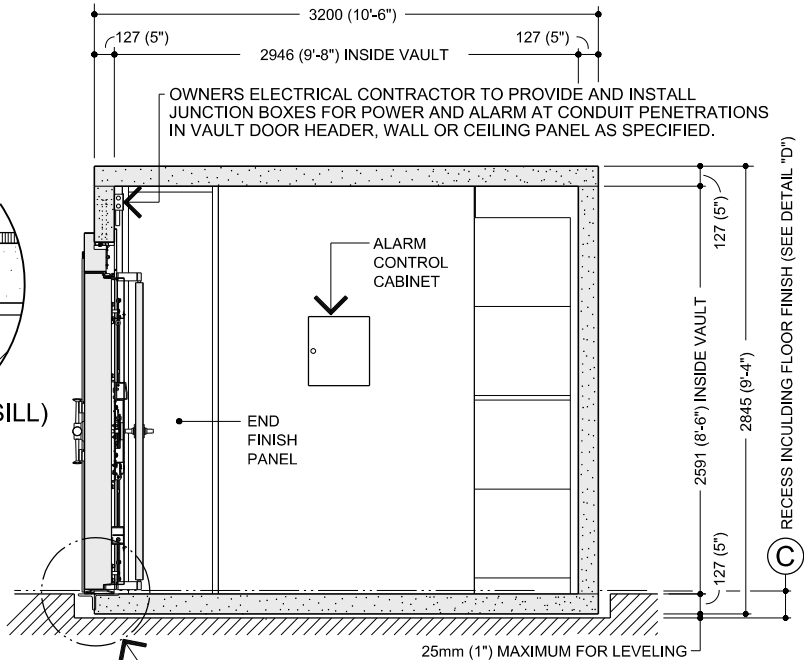
NOTE:

OWNERS G.C. TO VERIFY FLOOR COVERING THICKNESS TO BE APPLIED INSIDE AND OUTSIDE VAULT. OWNERS G.C. TO PREPARE FLOOR AS REQUIRED SO FINISHED FLOOR HEIGHT MEETS OR IS FEATHERED TO EDGE OF VAULT DOOR SILL HEIGHT, BUT DOES NOT EXCEED TOP OF SILL PLATE.

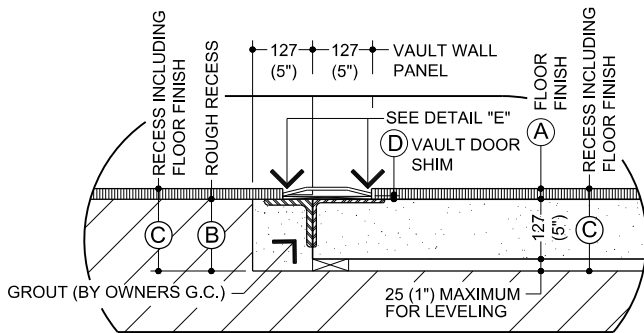


RECESS ALLOWS FOR 127mm (5") CLEARANCE ON FRONT AND 76mm (3") CLEARANCE ON SIDES AND BACK FOR INSTALLATION

PLAN VIEW



SECTION/ELEVATION "A"



DETAIL "D" (#165-82 / #165-84 RAISED SILL)

(A) FLOOR FINISH	13 (1/2")	16 (5/8")	19 (3/4")	22 (7/8")	25 (1")
(B) ROUGH RECESS	152 (6")	152 (6")	152 (6")	152 (6")	152 (6")
(C) RECESS INCLUDING FLOOR FINISH	165 (6 1/2")	168 (6 5/8")	171 (6 3/4")	174 (6 7/8")	178 (7")
(D) VAULT DOOR SHIM THICKNESS	0 (0")	3 (1/8")	6 (1/4")	10 (3/8")	13 (1/2")

*ALL DIMENSIONS AND DESIGN CRITERIA
SUBJECT TO CHANGE WITHOUT NOTICE.*

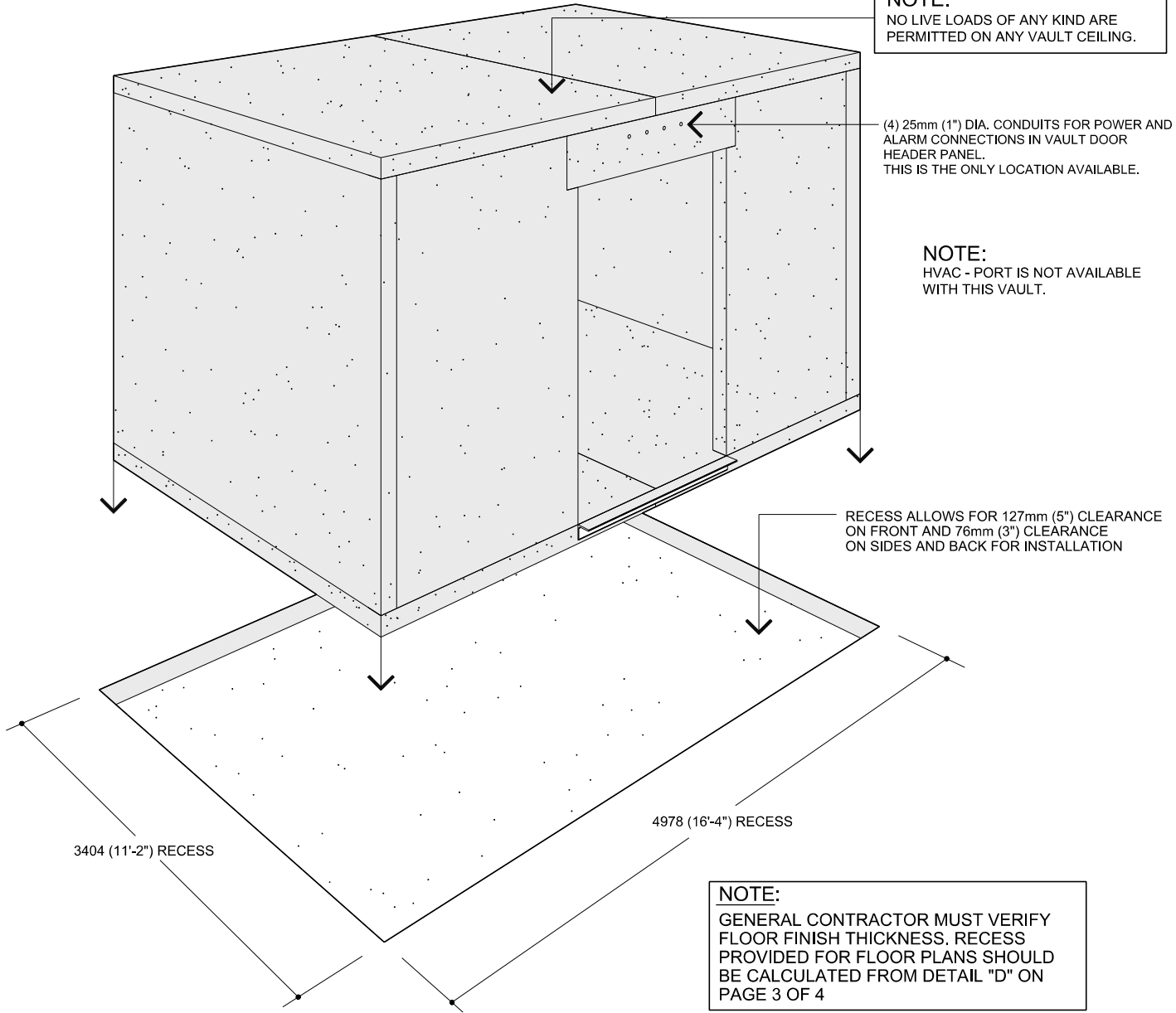
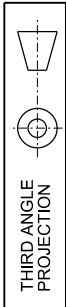


NOTE:
NO LIVE LOADS OF ANY KIND ARE PERMITTED ON ANY VAULT CEILING.

(4) 25mm (1") DIA. CONDUITS FOR POWER AND ALARM CONNECTIONS IN VAULT DOOR HEADER PANEL. THIS IS THE ONLY LOCATION AVAILABLE.

NOTE:
HVAC - PORT IS NOT AVAILABLE WITH THIS VAULT.

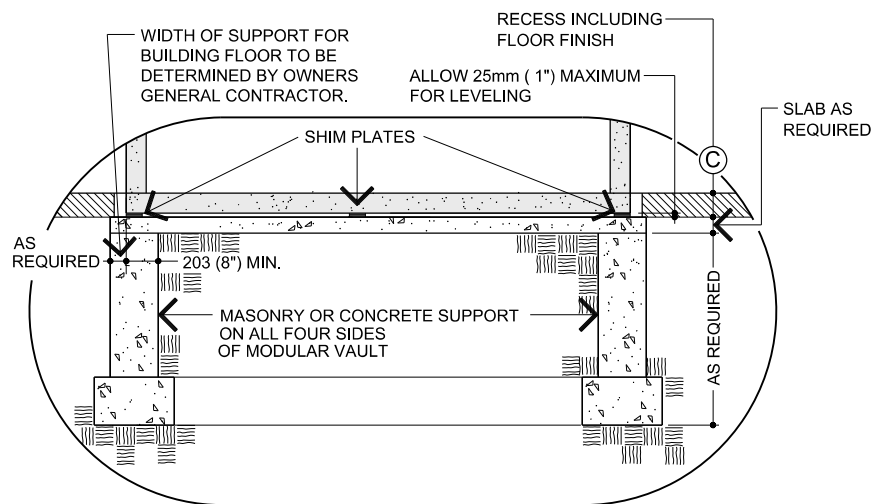
DIMENSIONS IN MILLIMETRES
(DIMENSIONS IN FEET-INCHES)



PAGE 4 OF 4

PERSPECTIVE

ALL DIMENSIONS AND DESIGN CRITERIA SUBJECT TO CHANGE WITHOUT NOTICE.



SECTION A